



IP66

220V
240V



Features

Lumen Maintenance	: L90 @ 60,000 hours
Working Temperature	: -25°C ~ 50°C
Storage Temperature	: -25°C ~ 65°C
Power Factor	: >0.95 at Full Load
THD	: <20% at Full Load

Material

Casing	: Galvanized steel with outdoor powder-coated finishing
LED Module	: Extrusion aluminium heatsink
Bracket	: Mild Steel / Stainless Steel (Optional)
Dimming	: (Optional) 1-10V / DALI / Timer

Advantages

- Can customize the fixture to produce 13°, 30°, 60°, 90°, 31°x119° beam angle.
- Rugged, slim profile mounting bracket that allows simple positioning & fixture rotation 270° full.

Application

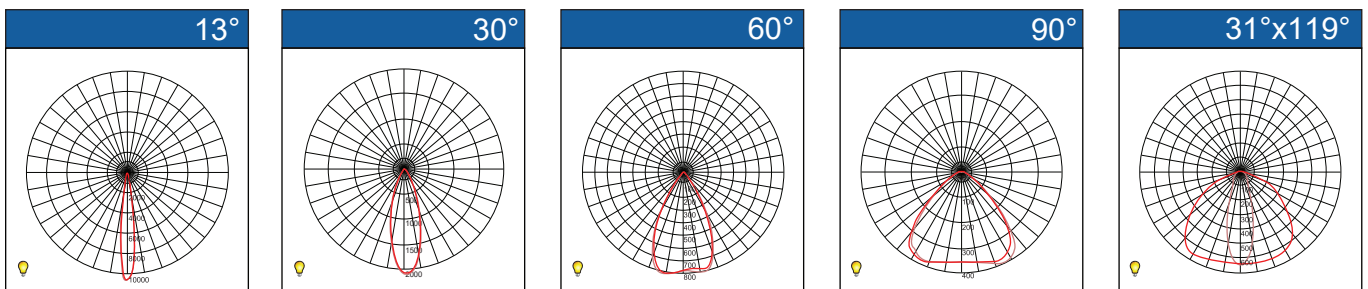
Applicable for Bridge, Building, Facade Lighting, Landscape Lighting and etc.

Specifications

Model No.	Power	Input current	Weight	Color	Efficacy	Lumen
OLE EVO ColorPRO24	24W	0.10A	2.55kg	RGB	45 lm/W	1080 lm
OLE EVO ColorPRO48	48W	0.20A	3.8kg	RGB	45 lm/W	2160 lm
OLE EVO ColorPRO72	72W	0.31A	5.2kg	RGB	45 lm/W	3240 lm
OLE EVO ColorPRO96	96W	0.41A	6.45kg	RGB	45 lm/W	4320 lm

**Reported CCT and System Lumen may have a tolerance of 10%*

Photometric Data



Floodlight

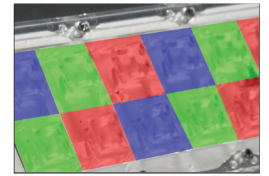


Feature Diagram

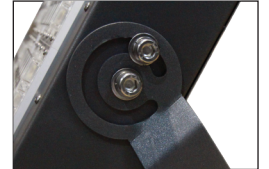


LED Module
Extrusion Aluminium
Heatsink

Casing material
Galvanized Steel with Outdoor
Powder-Coated Finishing



LED Module (RGB)

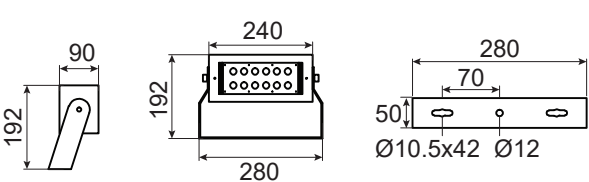
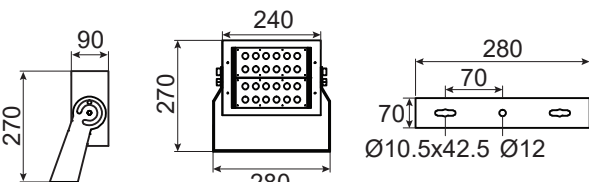
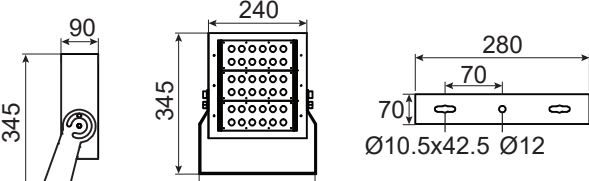


270° Side Locking Bolts



Optional for Stainless
Steel Bracket

Dimension

OLE EVO ColorPRO24	OLE EVO ColorPRO48
<p>Carton Size: (L)300x(W)210x(H)165</p> 	<p>Carton Size: (L)400x(W)296x(H)146</p> 
OLE EVO ColorPRO72	OLE EVO ColorPRO96
<p>Carton Size: (L)400x(W)296x(H)146</p> 	<p>Carton Size: (L)443x(W)296x(H)146</p> 