



SINCE 1993

www.oversealighting.com

LANDSCAPE LIGHTING

INDUSTRIAL LIGHTING

FACADE LIGHTING

LIGHTING CATALOG



Founded in 1993 by Dato' SK Wong DIMP, Oversea Lighting & Electric (M) Sdn Bhd has proudly established itself as Malaysia's leading provider of comprehensive LED lighting and pole solutions. With over 33 years of industry excellence, we have earned a strong reputation for innovation, quality, and reliability across both local and international markets.

Our operations are based in a cutting-edge manufacturing facility covering 378,972 square feet, where our dedicated team of specialists, technicians, and R&D experts work tirelessly to advance lighting technology. Through continuous research and innovation, we refine our manufacturing processes and materials to deliver high-performance, customized solutions that meet the evolving needs of our clients.



We are proudly accredited by numerous esteemed organizations, including SME Corporation Malaysia, the Ministry of International Trade and Industry (MITI), the Ministry of Finance, the Intellectual Property Corporation of Malaysia, SIRIM QAS International, IKRAM QA Services, and the JKR Electrical Material Approved List (JKR EMAL). In addition, we are certified under the prestigious Malaysian Brand Certification Scheme and are proud members of the Branding Association of Malaysia.

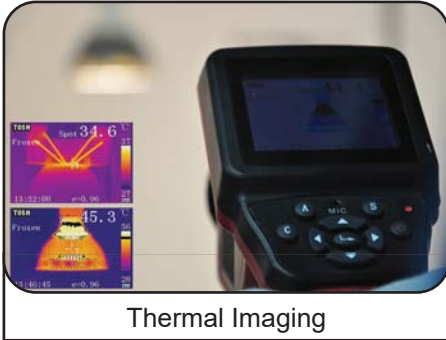
In line with Malaysia's Industry4WRD initiative and the global shift towards Industry 4.0, we have adopted smart manufacturing technologies, including IoT-based Smart Lighting Systems. Our solutions are built on a secure cloud infrastructure, enabling seamless, real-time asset monitoring and management. Designed for user-friendly operation and cost-effectiveness, our IoT systems are engineered to provide reliable performance at competitive pricing.



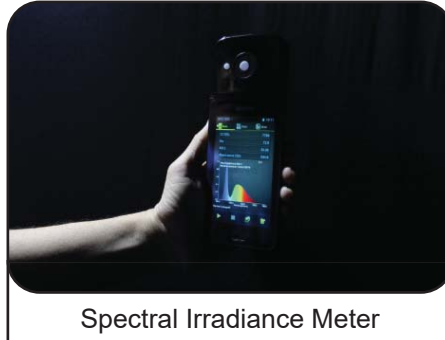
To support long-term customer satisfaction, we offer a 5-year product warranty and 20-year spare part availability, ensuring peace of mind and continued service well into the future.

All our products are rigorously tested and certified by SIRIM, proudly labeled *Buatan Malaysia* (Made in Malaysia), and approved by the Malaysian Communications and Multimedia Commission (MCMC) — underscoring our status as a trusted pioneer in Malaysia's LED lighting industry.

Research & Development



Thermal Imaging



Spectral Irradiance Meter



LS126C UV Light Meter



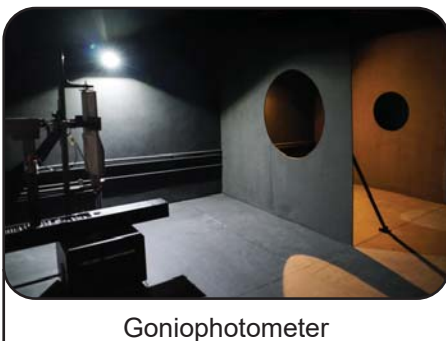
Waterproof IPX5 IPX6 Test Device



Multi-Channel Temperature Tester



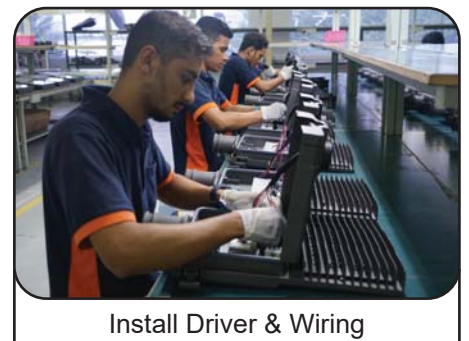
Flicker Illuminometer



Goniophotometer



Detector (Goniophotometer)



Install Driver & Wiring



Install LED



Install LED Glass



Automatic Screw Machine

Research & Development



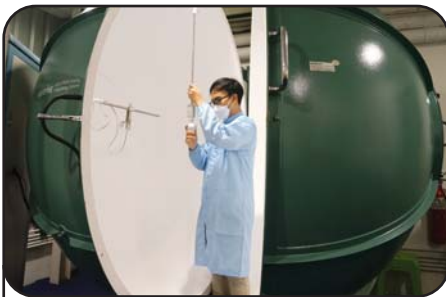
SMT Reflow Oven



Solder Paste Dispensing Station



SMT Station



Integrating Sphere



Temperature Chamber



CNC Fiber Laser Cutting Machine



Life Tester



CS9950 Programmable Grounding Resistance Tester



Insulation Resistance Tester



Luminance Meter LS-110



Illuminance Meter T-10



LMK Camera Photometer

LMK Camera Photometer

LMK Mobile R Camera

Professional imaging system for candela and luminance testing of street and area lights. Delivers accurate light distribution analysis with easy mobile operation and high resolution results.

Key Features

- High precision candela and luminance measurement
- Full-frame Canon EOS RP camera for superior image quality
- Mobile-ready system for on-site testing
- Fast light distribution analysis with LMK software
- Ideal for street and outdoor lighting evaluation



Software

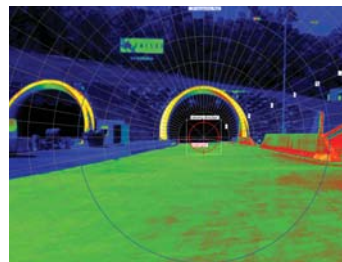
LMK LabSoft Measuring software



Evaluation of roadway lighting conforming to standards



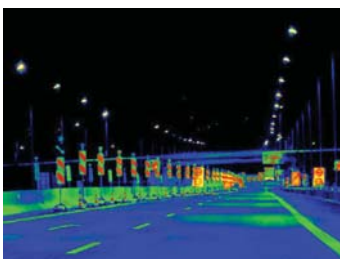
Determination of glare according to the TI method



Measurement of L20° luminance in the proximity zone of tunnel portals



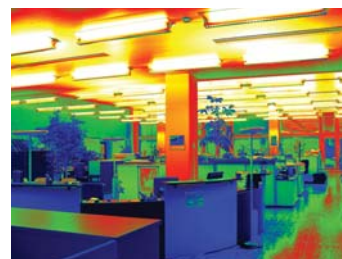
Luminance distribution and horizontal illuminance measurement on the aircraft parking area



Photometric evaluation of outdoor lighting systems



Determination of indoor glare



Interior workplace lighting



Evaluation of railway track lighting

CONTENTS

BUATAN MALAYSIA
CERTIFIED



SPORTS LIGHTING



CHAMPION

FLOODLIGHT



FL04



NEP PRO/NEP PRO SLIM



CHAMPION RGBW



EVO COLOR PRO



NEP COLOR PRO SLIM

WALL MOUNTED



DURA WM

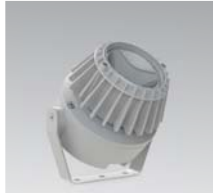


FLEXI MINI WM

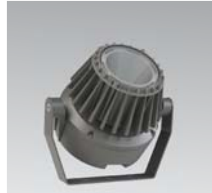
SPOTLIGHT



SPOT MIDI



L-PRO 7217



L-PRO 7228



L-PRO 7248

LANDSCAPE LIGHTING



ATLAS



ALPHA



ASO



ALBE



ARIA

INDUSTRIAL LIGHTING



NEP SLB



NEP RLB



UFO-F



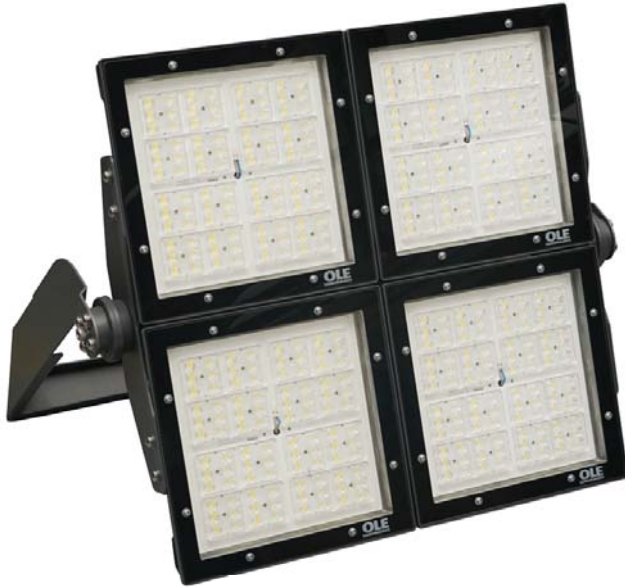
HB-22



HB-20



HB-03



IP66	IK09	220V 240V	CRI >70		
-------------	-------------	----------------------	-----------------------	---	---

Features

Lumen Maintenance : L90 @ 70,000 hours
 Working Temperature : -25°C ~ 50°C
 Storage Temperature : -25°C ~ 80°C
 Power Factor : >0.95 at Full Load
 THD : <20% at Full Load
 IP Protection : IP66 Optical Compartment

Material

Casing : Pressure Casted Aluminium ADC12, Powder-Coated Finishing
 Cover : 5mm Tempered Glass
 Bracket : Mild Steel / Stainless Steel (Optional)
 Dimming : (Optional) 0-10V / DALI / Timer

Advantages

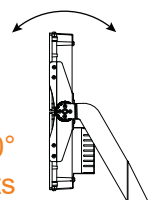
- Can customize the fixture to produce 15°, 30°, 60°, 90°, T2 beam angle. The option to add or combine a louver, full glare shield or half glare shield creates new aesthetic.
- Modular Design: Gear compartment separated from LED module to reduce heat.
- Rugged, slim profile mounting bracket that allows simple positioning & fixture rotation 270° full.

Application

Applicable for Tennis Court Lighting, Complex Sport Lighting, Golf Club Lighting, Football Stadium Lighting, Highmast Lighting, Amenity Lighting and etc.

Certification

Compliance to MS IEC 60598-1 : 2012, MS IEC 60598-2-5 : 2006



270°
Side locking bolts

C300 Module Specifications

Model No.	Power	Input current	Weight	CCT	Efficacy	Lumen
OLE C300	300W	1.30A	Fitting:10kg / Driver:2kg	3000K 4000K 5700K 6500K	150 lm/W 150 lm/W 160 lm/W 160 lm/W	45000 lm 45000 lm 48000 lm 48000 lm
OLE C600 OLE C600-AD	600W	2.61A	Fitting:17kg / Driver:5kg Fitting:18kg / Driver:5kg	3000K 4000K 5700K 6500K	150 lm/W 150 lm/W 160 lm/W 160 lm/W	90000 lm 90000 lm 96000 lm 96000 lm
OLE C900 OLE C900-AD	900W	3.91A	Fitting:23kg / Driver:5kg Fitting:27kg / Driver:5kg	3000K 4000K 5700K 6500K	150 lm/W 150 lm/W 160 lm/W 160 lm/W	135000 lm 135000 lm 144000 lm 144000 lm
OLE C1200 OLE C1200-AD	1200W	5.22A	Fitting:31kg / Driver:9kg Fitting:35kg / Driver:9kg	3000K 4000K 5700K 6500K	150 lm/W 150 lm/W 160 lm/W 160 lm/W	180000 lm 180000 lm 192000 lm 192000 lm
OLE C1800 OLE C1800-AD	1800W	7.83A	Fitting:42kg / Driver:11kg Fitting:48kg / Driver:11kg	3000K 4000K 5700K 6500K	150 lm/W 150 lm/W 160 lm/W 160 lm/W	270000 lm 270000 lm 288000 lm 288000 lm

* Flux data based on Ta = 25°C, CCT & Lumen +/-10%

Dimensions - C300 Standard Module

OLE C300	OLE C600
<p>Carton Size: (L)600x(W)460x(H)180</p>	<p>Carton Size: (L)790x(W)600x(H)180</p>
<p>OLE C900</p> <p>Carton Size: (L)1100x(W)600x(H)180</p>	<p>OLE C1200</p> <p>Carton Size: (L)910x(W)810x(H)180</p>
<p>OLE C1800</p> <p>Carton Size: (L)910x(W)1290x(H)180</p>	

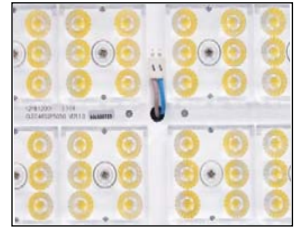
Feature Diagram



Cover
5mm Tempered Glass

LED Module
High Performance LED
with High Efficiency Lens

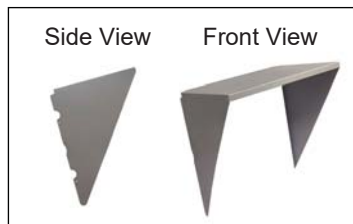
Casing Material
Pressure Casted Aluminium ADC12,
Powder-Coated Finishing



LED Module



Access to Gear and
Electronic Compartment



Louver (Optional)



Flexible & Adjustable
Bracket

Dimensions - C300 Adjustable Module

OLE C600-AD	OLE C900-AD
<p>Carton Size: (L)790x(W)700x(H)180</p>	<p>Carton Size: (L)1100x(W)700x(H)180</p>
OLE C1200-AD	OLE C1800-AD
<p>Carton Size: (L)1000x(W)810x(H)180</p>	<p>Carton Size: (L)1000x(W)1290x(H)180</p>

C400 Module Specifications

Model No.	Power	Input current	Weight	CCT	Efficacy	Lumen
OLE C400	400W	1.73A	Fitting:10kg / Driver:2kg	3000K	143 lm/W	57200 lm
				4000K	143 lm/W	57200 lm
				5700K	153 lm/W	61200 lm
				6500K	153 lm/W	61200 lm
OLE C800 OLE C800-AD	800W	3.48A	Fitting:17kg / Driver:5kg Fitting:18kg / Driver:5kg	3000K	143 lm/W	144400 lm
				4000K	143 lm/W	144400 lm
				5700K	153 lm/W	122400 lm
				6500K	153 lm/W	122400 lm
OLE C1200 OLE C1200-AD	1200W	5.22A	Fitting:23kg / Driver:5kg Fitting:27kg / Driver:5kg	3000K	143 lm/W	171600 lm
				4000K	143 lm/W	171600 lm
				5700K	153 lm/W	183600 lm
				6500K	153 lm/W	183600 lm
OLE C1500 OLE C1500-AD	1500W	6.51A	Fitting:31kg / Driver:9kg Fitting:35kg / Driver:9kg	3000K	143 lm/W	214500 lm
				4000K	143 lm/W	214500 lm
				5700K	153 lm/W	229500 lm
				6500K	153 lm/W	229500 lm
OLE C1800 OLE C1800-AD	1800W	7.83A	Fitting:42kg / Driver:11kg Fitting:48kg / Driver:11kg	3000K	143 lm/W	257400 lm
				4000K	143 lm/W	257400 lm
				5700K	153 lm/W	275400 lm
				6500K	153 lm/W	275400 lm

* Flux data based on Ta = 25°C, CCT & Lumen +/-10%

Dimensions - C400 Standard Module

OLE C400	OLE C800
<p>Carton Size: (L)600x(W)460x(H)180</p>	<p>Carton Size: (L)790x(W)600x(H)180</p>
OLE C1200	OLE C1500
<p>Carton Size: (L)1100x(W)600x(H)180</p>	<p>Carton Size: (L)910x(W)810x(H)180</p>
OLE C1800	
<p>Carton Size: (L)910x(W)1290x(H)180</p>	

Feature Diagram

Laser Aiming Device
Precise Beam Direction

Cover
5mm Tempered Glass

Casing Material
Pressure Casted Aluminium ADC12,
Powder-Coated Finishing

LED Module
High Performance LED
with High Efficiency Lens

Laser Aiming Device

Flexible & Adjustable Bracket

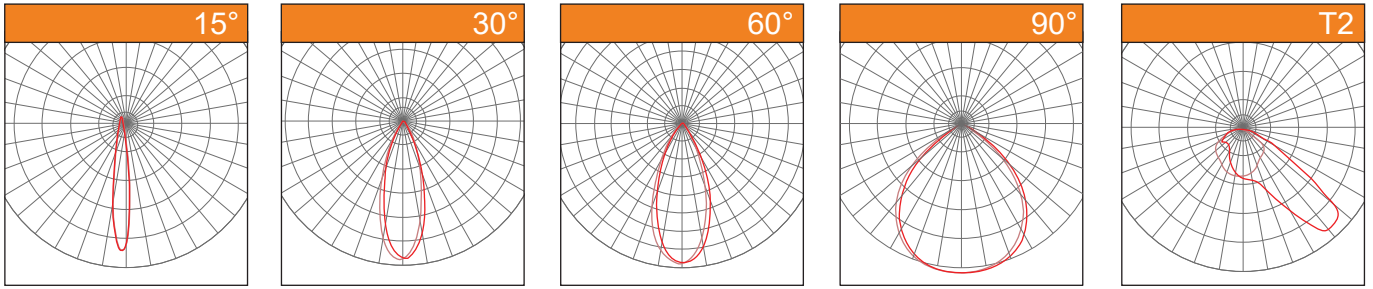
LED Module

Access to Gear and Electronic Compartment

Dimensions - C400 Adjustable Module

<p>OLE C800-AD</p> <p>Carton Size: (L)790x(W)700x(H)180</p>	<p>OLE C1200-AD</p> <p>Carton Size: (L)1100x(W)700x(H)180</p>
<p>OLE C1500-AD</p> <p>Carton Size: (L)1000x(W)810x(H)180</p>	<p>OLE C1800-AD</p> <p>Carton Size: (L)1000x(W)1290x(H)180</p>

Photometric Data



OLE Champion @ Mini Stadium Kompleks Sukan 3K Subang, Selangor



OLE Champion @ Stadium Arena MBSJ, Subang Jaya, Selangor



IP66

IK08

120V
480V

CRI
>70

Features

Lumen Maintenance : L70 @ 100,000 hours
Ambient Temperature : -40°C ~ 50°C
Power Factor : >0.95 at Full Load
THD : <20% at Full Load

Material

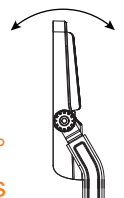
Lens Material : PC Lens + Glass Cover
Dimming : 0-10V Dimming / DMX512

Advantages

- High brightness, wide irradiation area for better lighting effect.
- Rugged, slim profile mounting bracket that allows simple positioning & fixture rotation 180°.
- Efficient heatsink for optimal heat dissipation.

Application

Applicable for Public Square, Parking Lot, Sporting Facility, Airport, Railway, Port, Shipping Yard and Container Loading Area.



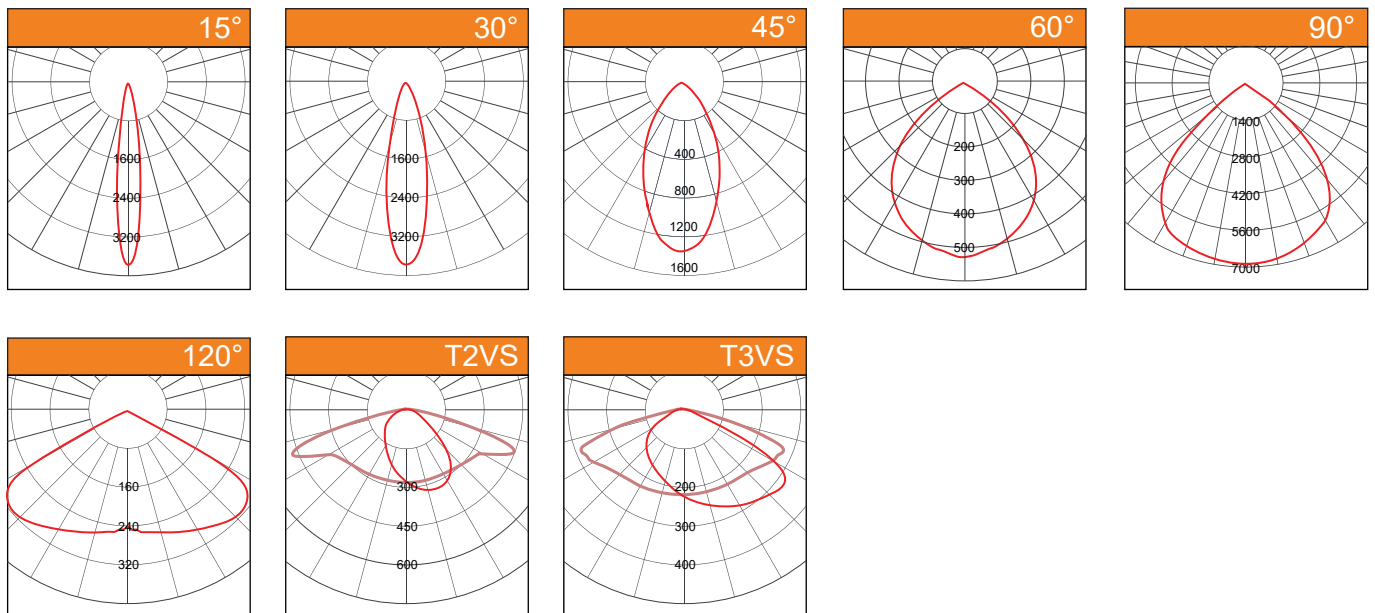
180°
Side locking bolts

Specifications

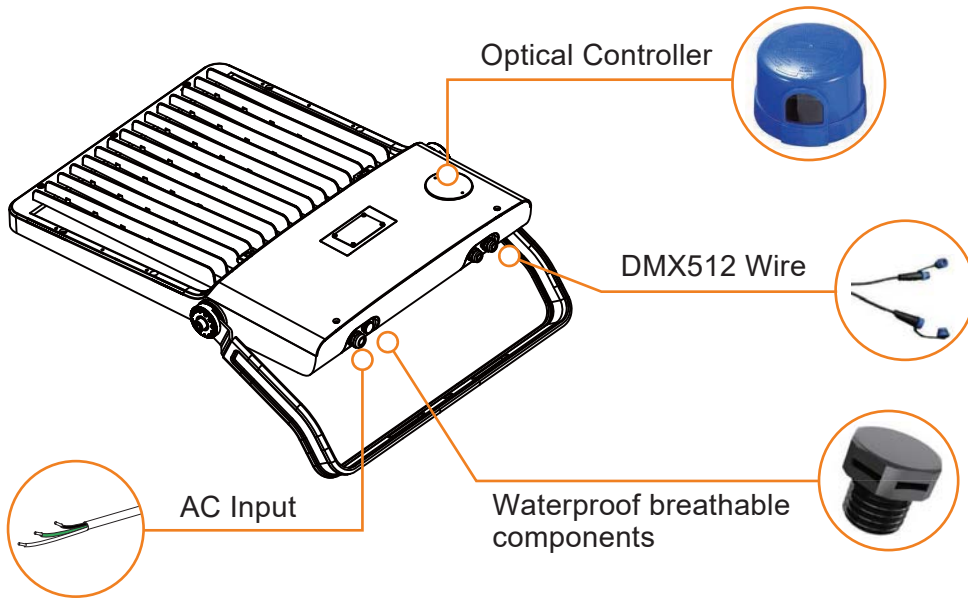
Model No.	Power	Input current	Weight	CCT	Efficacy	Lumen
OLE FL04-100	100W	0.43A	5.4kg	<3000K	160 lm/W	16000 lm
				4000K	160 lm/W	16000 lm
				5700K	160 lm/W	16000 lm
				6500K	160 lm/W	16000 lm
OLE FL04-200	200W	0.87A	7.0kg	<3000K	160 lm/W	32000 lm
				4000K	160 lm/W	32000 lm
				5700K	160 lm/W	32000 lm
				6500K	160 lm/W	32000 lm
OLE FL04-320	320W	1.39A	9.4kg	<3000K	160 lm/W	51200 lm
				4000K	160 lm/W	51200 lm
				5700K	160 lm/W	51200 lm
				6500K	160 lm/W	51200 lm
OLE FL04-480	480W	2.09A	13.0kg	<3000K	160 lm/W	76800 lm
				4000K	160 lm/W	76800 lm
				5700K	160 lm/W	76800 lm
				6500K	160 lm/W	76800 lm
OLE FL04-600	600W	2.60A	13.9kg	<3000K	160 lm/W	96000 lm
				4000K	160 lm/W	96000 lm
				5700K	160 lm/W	96000 lm
				6500K	160 lm/W	96000 lm
OLE FL04-1000	1000W	4.35A	18.0kg	<3000K	160 lm/W	160000 lm
				4000K	160 lm/W	160000 lm
				5700K	160 lm/W	160000 lm
				6500K	160 lm/W	160000 lm

* Flux data based on Ta = 25°C, CCT & Lumen +/-10%

Photometric Data



Feature Diagram



IP66 Waterproof



Efficient Heat Dissipation



Flexible & Adjustable Bracket

Dimensions

OLE FL04-100	OLE FL04-200
<p>Carton Size: (L)490x(W)355x(H)120</p>	<p>Carton Size: (L)545x(W)405x(H)120</p>
OLE FL04-320	OLE FL04-480 OLE FL04-600
<p>Carton Size: (L)605x(W)460x(H)130</p>	<p>Carton Size: (L)740x(W)535x(H)135</p>
OLE FL04-1000	
<p>Carton Size: (L)840x(W)630x(H)135</p>	

OLE NEP PRO / NEP PRO SLIM



OLE NEP PRO



OLE NEP PRO SLIM



IP66	220V 240V	CRI >70	BUATAN MALAYSIA MADE IN MALAYSIA	SIRIM
------	--------------	------------	-------------------------------------	-------

Features

Lumen Maintenance : L90 @ 60,000 hours
 Working Temperature : -25°C ~ 40°C
 Storage Temperature : -25°C ~ 80°C
 Power Factor : >0.95 at Full Load
 THD : <20% at Full Load
 IP Protection : IP66 Optical Compartment

Material

Casing : Galvanized Steel with Outdoor Powder-Coated Finishing
 LED Module : Extrusion Aluminium Heatsink
 Bracket : Mild Steel / Stainless Steel (Optional)
 Dimming : (Optional) 1-10V / DALI / Timer

Advantages

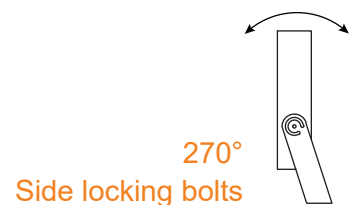
- Can customize the fixture to produce 30°, 60°, 90°, 90°x120° beam angle.
- Rugged, slim profile mounting bracket that allows simple positioning & fixture rotation 270° full.

Application

Applicable for Tennis Court Lighting, Complex Sport Lighting, Golf Club Lighting, Football Stadium Lighting, Highmast Lighting, Amenity Lighting and Tunnel Lighting.

Certification

Compliance to LED Module: IEC62031
 Compliance to MS IEC 60598-1 : 2012, MS IEC 60598-2-5 : 2006

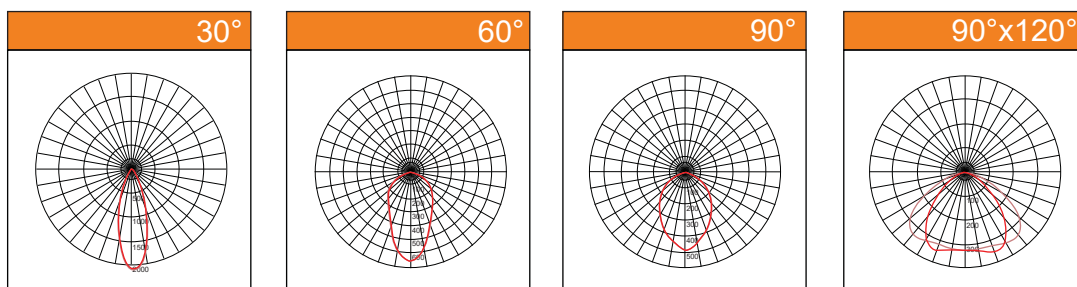


Specifications

Model No.	Power	Input current	Weight	CCT	Efficacy	Lumen
OLE NEP PRO60 OLE NEP PRO SLIM60	60W	0.26A	4.2kg 2.52kg	<3500K 4000K 5000K 6000K	175 lm/W 182 lm/W 185 lm/W 190 lm/W	10500 lm 10920 lm 11100 lm 11400 lm
OLE NEP PRO120 OLE NEP PRO SLIM120	120W	0.52A	5.55kg 2.67kg	<3500K 4000K 5000K 6000K	175 lm/W 182 lm/W 185 lm/W 190 lm/W	21000 lm 21840 lm 22200 lm 22800 lm
OLE NEP PRO180 OLE NEP PRO SLIM180	180W	0.78A	7.35kg 2.82kg	<3500K 4000K 5000K 6000K	175 lm/W 182 lm/W 185 lm/W 190 lm/W	31500 lm 32760 lm 33300 lm 34200 lm
OLE NEP PRO240 OLE NEP PRO SLIM240	240W	1.04A	8.25kg 2.97kg	<3500K 4000K 5000K 6000K	175 lm/W 182 lm/W 185 lm/W 190 lm/W	42000 lm 43680 lm 44400 lm 45600 lm
OLE NEP PRO300 OLE NEP PRO SLIM300	300W	1.30A	11.7kg 3.12kg	<3500K 4000K 5000K 6000K	175 lm/W 182 lm/W 185 lm/W 190 lm/W	52500 lm 54600 lm 55500 lm 57000 lm
OLE NEP PRO360 OLE NEP PRO SLIM360	360W	1.56A	13.25kg 3.27kg	<3500K 4000K 5000K 6000K	175 lm/W 182 lm/W 185 lm/W 190 lm/W	36000 lm 65520 lm 66600 lm 68400 lm
OLE NEP PRO420 OLE NEP PRO SLIM420	420W	1.82A	15.95kg 3.42kg	<3500K 4000K 5000K 6000K	175 lm/W 182 lm/W 185 lm/W 190 lm/W	73500 lm 76440 lm 77700 lm 79800 lm
OLE NEP PRO480 OLE NEP PRO SLIM480	480W	2.08A	17.25kg 4.92kg	<3500K 4000K 5000K 6000K	175 lm/W 182 lm/W 185 lm/W 190 lm/W	84000 lm 87360 lm 88800 lm 91200 lm
OLE NEP PRO600 OLE NEP PRO SLIM600	600W	2.60A	20.45kg 4.12kg	<3500K 4000K 5000K 6000K	175 lm/W 182 lm/W 185 lm/W 190 lm/W	105000 lm 109200 lm 111000 lm 114000 lm
OLE NEP PRO720 OLE NEP PRO SLIM720	720W	3.13A	24.7kg 4.32kg	<3500K 4000K 5000K 6000K	175 lm/W 182 lm/W 185 lm/W 190 lm/W	126000 lm 131040 lm 133200 lm 136800 lm
OLE NEP PRO840 OLE NEP PRO SLIM840	840W	3.65A	26.2kg 4.62kg	<3500K 4000K 5000K 6000K	175 lm/W 182 lm/W 185 lm/W 190 lm/W	147000 lm 152880 lm 155400 lm 159600 lm

* Flux data based on Luxeon 5050 LED, Cool white CCT, Ta = 25°C, Reported CCT and system lumen have tolerance of 10%

Photometric Data



Feature Diagram



LED Module
Extrusion Aluminium
Heatsink

Casing Material
Galvanized Steel with Outdoor
Powder-Coated Finishing



LED Module



270° Side Locking Bolts



Optional for Stainless
Steel Bracket

Dimensions

<p>OLE NEP PRO60</p> <p>Carton Size: (L)385x(W)345x(H)150</p>	<p>OLE NEP PRO120</p> <p>Carton Size: (L)443x(W)296x(H)146</p>	<p>OLE NEP PRO180</p> <p>Carton Size: (L)385x(W)480x(H)160</p>
<p>OLE NEP PRO240</p> <p>Carton Size: (L)515x(W)550x(H)160</p>	<p>OLE NEP PRO300</p> <p>Carton Size: (L)515x(W)550x(H)160</p>	<p>OLE NEP PRO360</p> <p>Carton Size: (L)595x(W)600x(H)160</p>
<p>OLE NEP PRO420</p> <p>Carton Size: (L)675x(W)645x(H)160</p>	<p>OLE NEP PRO480</p> <p>Carton Size: (L)675x(W)645x(H)160</p>	<p>OLE NEP PRO600</p> <p>Carton Size: (L)675x(W)750x(H)160</p>
<p>OLE NEP PRO720</p> <p>Carton Size: (L)675x(W)935x(H)160</p>	<p>OLE NEP PRO840</p> <p>Carton Size: (L)675x(W)935x(H)160</p>	

Feature Diagram

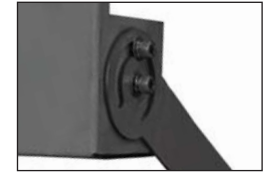


LED Module
Extrusion Aluminium
Heatsink

Casing Material
Galvanized Steel with Outdoor
Powder-Coated Finishing



LED Module



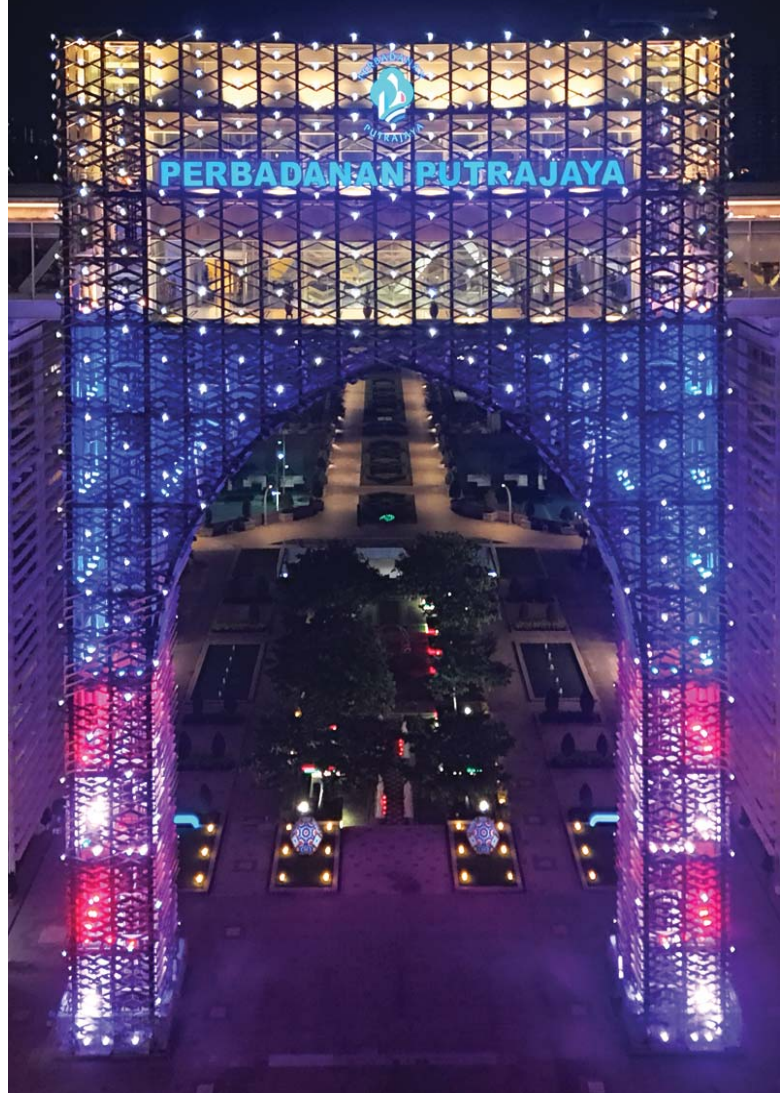
270° Side Locking Bolts



Optional for Stainless
Steel Bracket

Dimensions

OLE NEP PRO SLIM 60	OLE NEP PRO SLIM 120	OLE NEP PRO SLIM 180
<p>Carton Size: (L)50x(W)360x(H)320</p>	<p>Carton Size: (L)50x(W)360x(H)400</p>	<p>Carton Size: (L)50x(W)360x(H)470</p>
OLE NEP PRO SLIM 240	OLE NEP PRO SLIM 300	OLE NEP PRO SLIM 360
<p>Carton Size: (L)50x(W)360x(H)550</p>	<p>Carton Size: (L)50x(W)360x(H)625</p>	<p>Carton Size: (L)50x(W)360x(H)700</p>
OLE NEP PRO SLIM 420	OLE NEP PRO SLIM 480	OLE NEP PRO SLIM 600
<p>Carton Size: (L)50x(W)360x(H)780</p>	<p>Carton Size: (L)50x(W)670x(H)550</p>	<p>Carton Size: (L)50x(W)670x(H)630</p>
OLE NEP PRO SLIM 720	OLE NEP PRO SLIM 840	
<p>Carton Size: (L)690x(W)670x(H)50</p>	<p>Carton Size: (L)50x(W)670x(H)780</p>	



IP66	IK09	220V 240V	MADE IN MALAYSIA	SIRIM
------	------	--------------	---------------------	-------

Features

Lumen Maintenance	: L90 @ 70,000 hours
Working Temperature	: -25°C ~ 50°C
Storage Temperature	: -25°C ~ 80°C
CRI	: >70 (Optional >80, >90)
Power Factor	: >0.95 at Full Load
THD	: <20% at Full Load
IP Protection	: IP66 Optical Compartment

Material

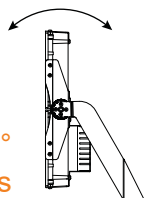
Casing	: Pressure Casted Aluminium ADC12, Powder-Coated Finishing
Cover	: 5mm Tempered Glass
Bracket	: Mild Steel / Stainless Steel (Optional)
Diming	: 0-10V / DALI / Timer (Optional)

Advantages

- Can customize the fixture to produce 15°, 30°, 60°, 90° beam angle. The option to add or combine a louver, full glare shield or half glare shield creates new aesthetic.
- Modular Design: Gear compartment separated from LED module to reduce heat.
- Rugged, slim profile mounting bracket that allows simple positioning & fixture rotation 270° full.

Application

Applicable for Bridge, Building, Facade Lighting, Landscape Lighting and etc.



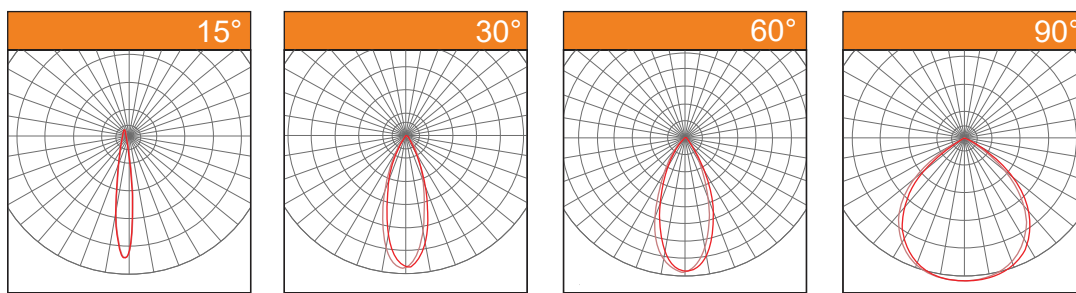
270°
Side locking bolts

Specifications

Model No.	Power	Input current	Weight	Color	Efficacy	Lumen
OLE C200	200W	0.87A	12kg	RGBW	45 lm/W	9000 lm
OLE C400	400W	1.74A	23kg	RGBW	45 lm/W	18000 lm
OLE C600	600W	2.6A	32kg	RGBW	45 lm/W	27000 lm
OLE C800	800W	3.48A	39kg	RGBW	45 lm/W	36000 lm

* Control Interface : Data Enabler Pro (DMX), Flux data based on CREE LED, 33° Beam angle, Ta = 25°C. Lumen +-10%

Photometric Data



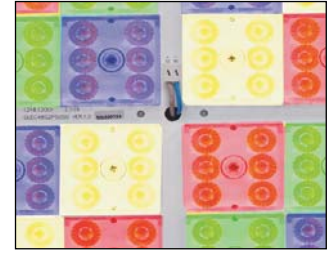
Feature Diagram



LED Module
High Performance LED
with High Efficiency Lens

Cover
5mm Tempered Glass

Casing Material
Pressure Casted Aluminium ADC12,
Powder-Coated Finishing



LED Module



Access to Gear and
Electronic Compartment



Optional for Stainless
Steel Bracket

Dimensions

OLE C200		OLE C400	
Carton Size: (L)600x(W)460x(H)180 Fitting:9.72kg / Driver:2.15kg		Carton Size: (L)790x(W)600x(H)180 Fitting:17.42kg / Driver:5.41kg	
OLE C600		OLE C800	
Carton Size: (L)1100x(W)600x(H)180 Fitting:26.76kg / Driver:5.41kg		Carton Size: (L)910x(W)810x(H)180 Fitting:33.32kg / Driver:5.41kg	



Features

- Lumen Maintenance : L90 @ 60,000 hours
- Working Temperature : -25°C ~ 40°C
- Storage Temperature : -25°C ~ 65°C
- Power Factor : >0.95 at Full Load
- THD : <20% at Full Load
- IP Protection : IP66 Optical Compartment

Material

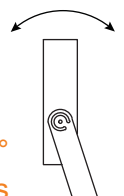
- Casing : Galvanized Steel with Outdoor Powder-Coated Finishing
- LED Module : Extrusion Aluminium Heatsink
- Bracket : Mild Steel / Stainless Steel (Optional)
- Dimming : (Optional) 1-10V / DALI / Timer

Advantages

- Can customize the fixture to produce 13°, 30°, 60°, 90°, 31°x119° beam angle.
- Rugged, slim profile mounting bracket that allows simple positioning & fixture rotation 270° full.

Application

Applicable for Bridge, Building, Facade Lighting, Landscape Lighting and etc.



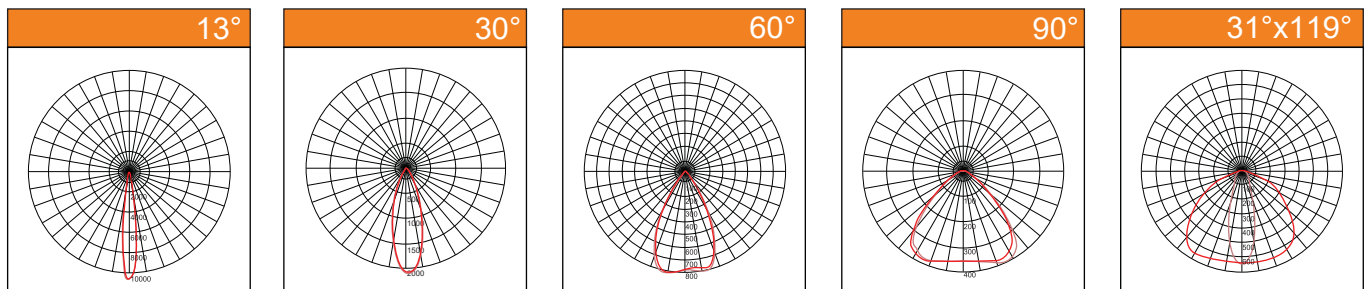
270°
Side locking bolts

Specifications

Model No.	Power	Input current	Weight	Color	Efficacy	Lumen
OLE EVO ColorPRO24	24W	0.10A	2.55kg	RGB	45 lm/W	1080 lm
OLE EVO ColorPRO48	48W	0.20A	3.8kg	RGB	45 lm/W	2160 lm
OLE EVO ColorPRO72	72W	0.31A	5.2kg	RGB	45 lm/W	3240 lm
OLE EVO ColorPRO96	96W	0.41A	6.45kg	RGB	45 lm/W	4320 lm

**Reported CCT and System Lumen may have a tolerance of 10%*

Photometric Data

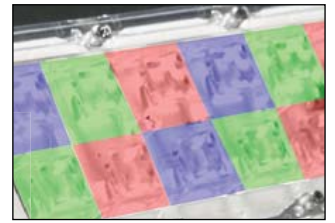


Feature Diagram



LED Module
Extrusion Aluminium
Heatsink

Casing Material
Galvanized Steel with Outdoor
Powder-Coated Finishing



LED Module

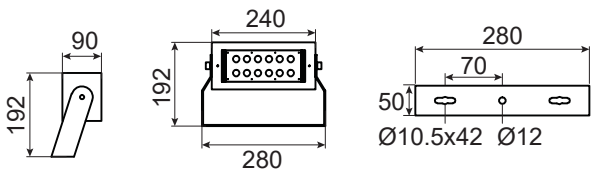
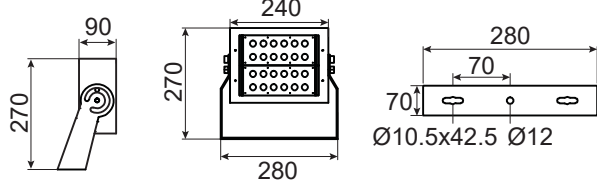
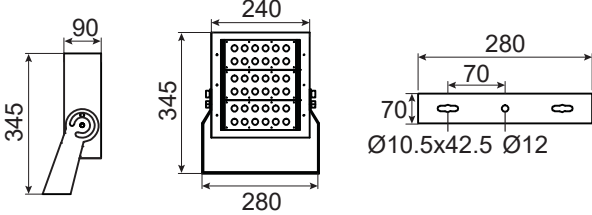
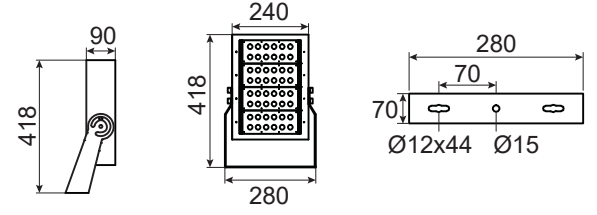


270° Side Locking Bolts



Optional for Stainless
Steel Bracket

Dimensions

OLE EVO ColorPRO24	OLE EVO ColorPRO48
<p>Carton Size: (L)300x(W)210x(H)165</p> 	<p>Carton Size: (L)400x(W)296x(H)146</p> 
OLE EVO ColorPRO72	OLE EVO ColorPRO96
<p>Carton Size: (L)400x(W)296x(H)146</p> 	<p>Carton Size: (L)443x(W)296x(H)146</p> 

OLE NEP COLOR PRO SLIM



IP66	220V 240V	CRI >70	MADE IN MALAYSIA	SIRIM
-------------	----------------------	-----------------------	-----------------------------	--------------

Features

Lumen Maintenance	: L90 @ 60,000 hours
Working Temperature	: -25°C ~ 40°C
Storage Temperature	: -25°C ~ 80°C
Power Factor	: >0.95 at Full Load
THD	: <20% at Full Load
IP Protection	: IP66 Optical Compartment

Material

Casing	: Galvanized Steel with Outdoor Powder-Coated Finishing
LED Module	: Extrusion Aluminium Heatsink
Bracket	: Mild Steel / Stainless Steel (Optional)
Dimming	: (Optional) 1-10V / DALI / Timer

Advantages

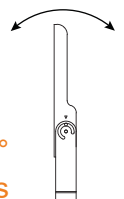
- Can customize the fixture to produce 15°, 30°, 60°, 90° beam angle.
- Rugged, slim profile mounting bracket that allows simple positioning & fixture rotation 270° full.

Application

Applicable for Tennis Court Lighting, Complex Sport Lighting, Golf Club Lighting, Football Stadium Lighting, Highmast Lighting, Amenity Lighting and Tunnel Lighting.

Certification

Compliance to LED Module: IEC62031
 Compliance to MS IEC 60598-1 : 2012, MS IEC 60598-2-5 : 2006



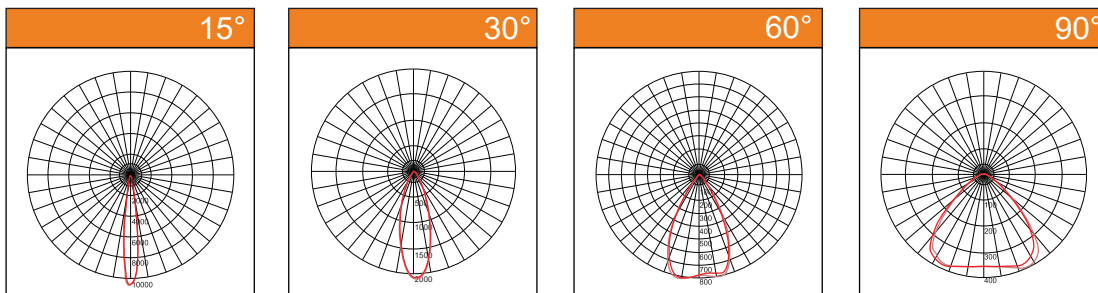
270°
Side locking bolts

Specifications

Model No.	Power	Input current	Weight	Color	Efficacy	Lumen
OLE NEP COLOR PRO50	50W	0.22A	2.52kg	RGBW	45 lm/W	2250 lm
OLE NEP COLOR PRO75	75W	0.33A	2.67kg	RGBW	45 lm/W	3375 lm
OLE NEP COLOR PRO100	100W	0.43A	2.82kg	RGBW	45 lm/W	4500 lm
OLE NEP COLOR PRO120	120W	0.52A	2.97kg	RGBW	45 lm/W	5400 lm
OLE NEP COLOR PRO150	150W	0.65A	3.12kg	RGBW	45 lm/W	6750 lm

** Flux data based on Luxeon 5050 LED, Cool white CCT, Ta = 25°C, Reported CCT and system lumen have tolerance of 10%*

Photometric Data

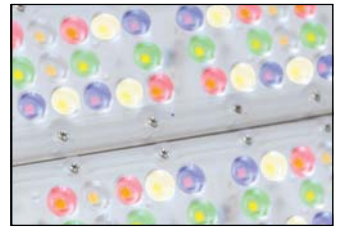


Feature Diagram

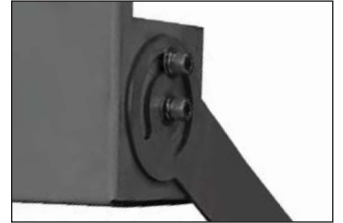


LED Module
Extrusion Aluminium
Heatsink

Casing Material
Galvanized Steel with Outdoor
Powder-Coated Finishing



LED Module



270° Side Locking Bolts



Optional for Stainless
Steel Bracket

Dimensions

OLE NEP PRO50	OLE NEP PRO75	OLE NEP PRO100
<p>Carton Size: (L)50x(W)360x(H)320</p>	<p>Carton Size: (L)50x(W)360x(H)400</p>	<p>Carton Size: (L)50x(W)360x(H)400</p>
OLE NEP PRO120	OLE NEP PRO150	
<p>Carton Size: (L)50x(W)360x(H)470</p>	<p>Carton Size: (L)50x(W)360x(H)470</p>	

Accessories

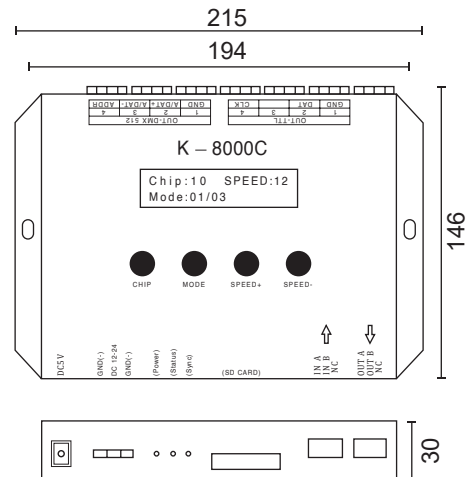
For RGBW products, a DMX system is required.

DMX Controller

Standalone and Offline Mode DMX



Dimension



Specification

- Model: : OLE-K-8000C
- Working Temperature : -20°C ~ 75°C
- Storage Power : DC 5V / DC 12-24V input
- Power Consumption : 5W
- Weight : 0.8 Kg

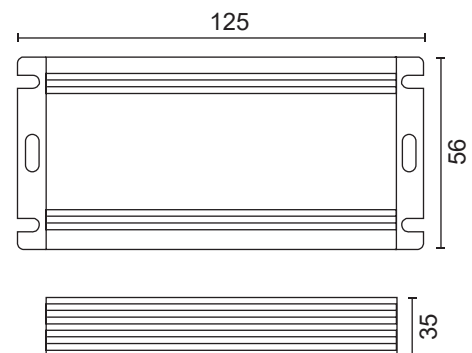
Memory Card

- Type : SD Card
- Capacity : 128MB - 32GB
- Format : FAT or FAT32
- Storage file : *.led

Signal Booster



Dimension



Specification

- Model: : OLE-ZJ-V6
- Working Temperature : -20°C ~ 65°C
- Operating Power : DC12-60V
- Transmission Distance : 50-100m
- Weight : 1.5 Kg

Accessories

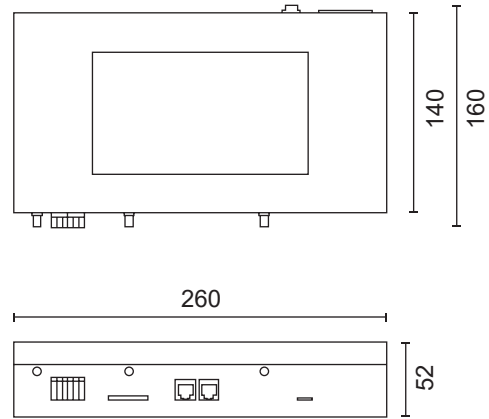
For RGBW products, a DMX system is required.

DMX Master Controller

Online and Offline Mode DMX



Dimension



Specification

Model: : OLE-XB-809
 Working Temperature : -10°C ~ 60°C
 Operating Power : AC110-240V
 Power Consumption : 10W
 Weight : 2.0 Kg

Memory Card

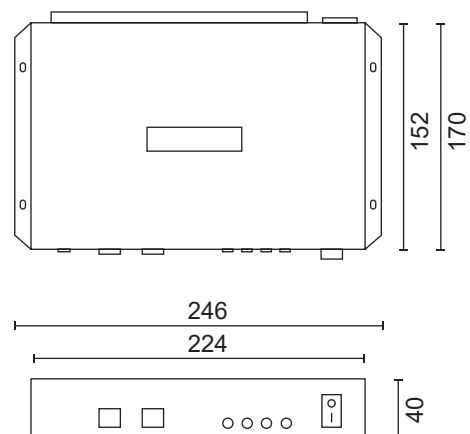
Type : SDHC Card
 Capacity : 4GB - 32GB
 Format : FAT32
 Storage file : *.BIN

DMX Sub-Controller

Online and Offline Mode DMX



Dimension

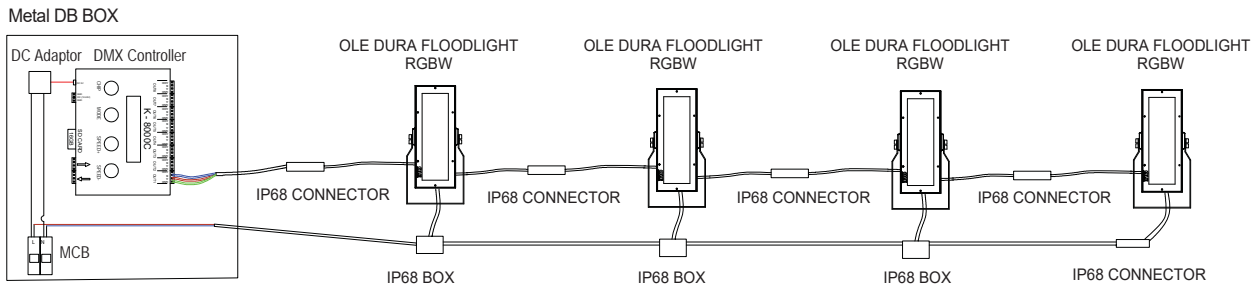


Specification

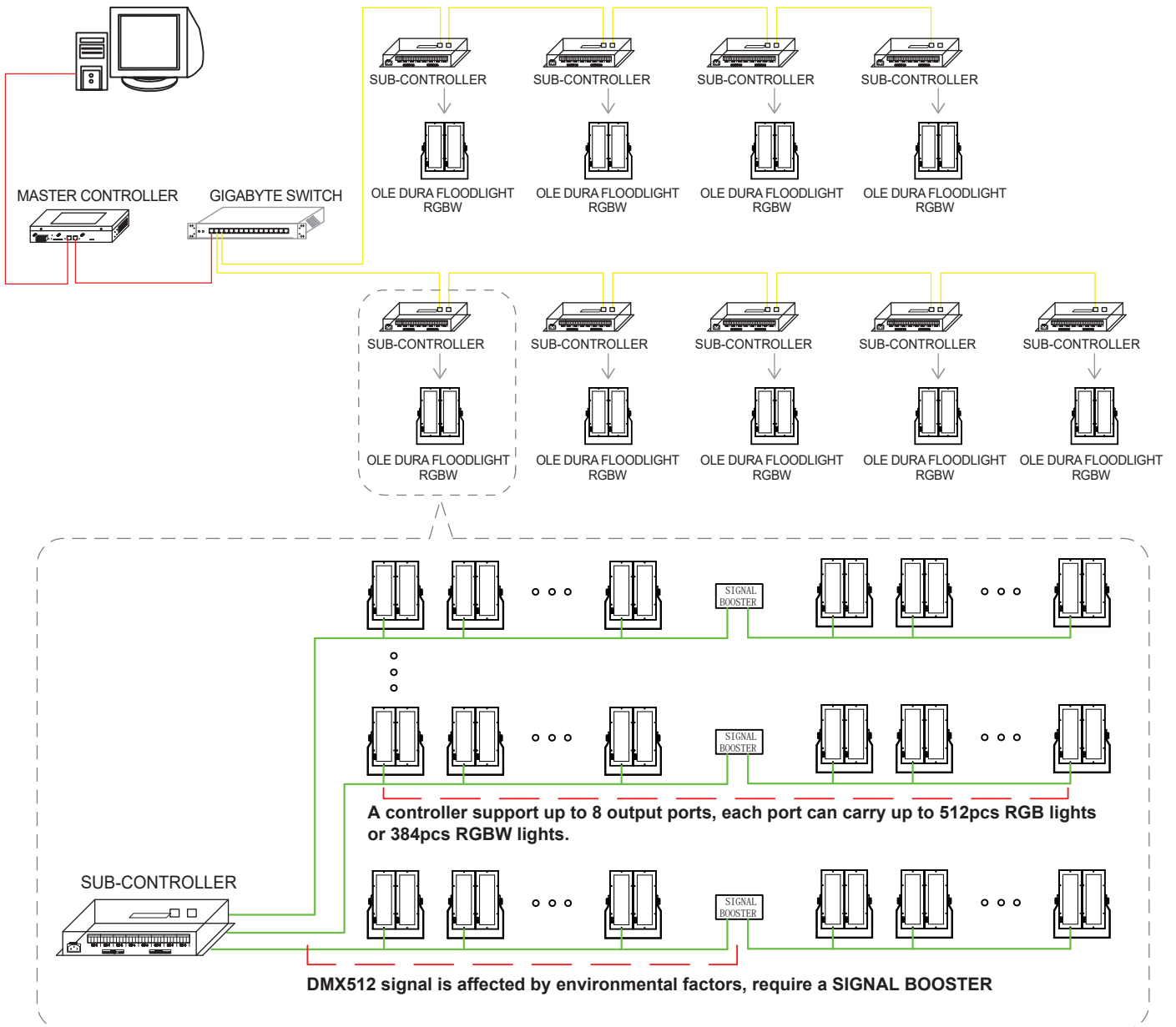
Model: : OLE-T760K
 Working Temperature : -20°C ~ 75°C
 Operating Power : AC100-240V
 Power Consumption : 10W
 Weight : 1.5 Kg

DMX Control System Diagram

Standalone and Offline Mode DMX Signal Wiring Diagram



Online and Offline Mode DMX Signal Wiring Diagram

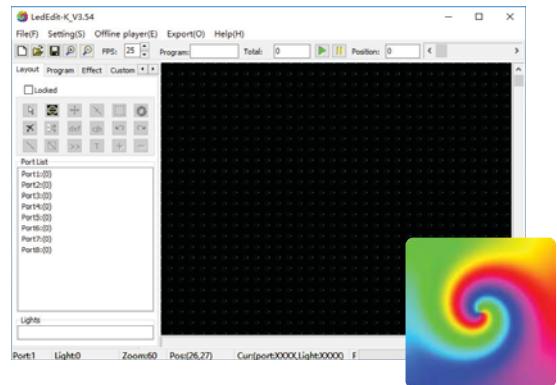


LEDEdit

LEDEdit is a popular LED programming software designed for pixel LED and architectural lighting control. It is widely used in building facades, stage lighting, and creative lighting displays due to its simple interface and flexible control options.

Key Features

- Supports a variety of LED controllers and pixel mapping.
- User-friendly interface for creating effects and animations.
- Ideal for architectural lighting and display screens.



Hardware

Basic: Controller OLE-K-8000C

Advanced: Master Controller OLE-XB-809 + Sub-Controller OLE-T760K

Madrix

Madrix is a professional lighting control software designed for DMX, Art-Net, and pixel-based LED installations. Known for its real-time performance and creative flexibility, it is widely used in stage shows, concerts, and large-scale architectural projects.

Key Features

- Real-time generation of dynamic lighting effects.
- Advanced audio-to-light synchronization.
- Scalable from small projects to large installations.



Hardware

Setup: PC running Madrix + Sub-Controller OLE-T760K (for DMX/Pixel output)

Pharos Control

Pharos Control is a powerful, network-based lighting control system designed for architectural, façade, and entertainment lighting. Known for its reliability and flexibility, it offers advanced scheduling, triggering, and integration features suitable for permanent installations.

Key Features

- Fully customizable lighting timelines and triggers.
- Scalable system with network-based control.
- Designed for permanent installations such as facades, landmarks, and themed attractions.

Hardware - Pharos Designer



LPC

Lighting Playback Controller



VLC

Video Lighting Controller



TPS

Touch Panel Station



BPS

Button Panel Station



RIO

Remote Input Output



END

Ethernet Data Node



SDI



REPEAT



Switch



IP66	IK09	220V 240V	CRI >70	
------	------	--------------	------------	---



Features

Lumen Maintenance	: L90 @ 70,000 hours
Working Temperature	: -25°C ~ 50°C
Storage Temperature	: -25°C ~ 80°C
Power Factor	: >0.95 at Full Load
THD	: <20% at Full Load
IP Protection	: IP66 Optical Compartment

Advantages

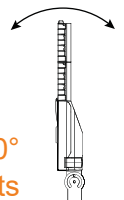
- Modular Design: Gear compartment separated from LED module to reduce heat. Higher power can be upgraded in the future without having to replace whole fixture.
- Support NEMA socket for smart control.

Application

Applicable for Sports Lighting, Ports, Stadium, Highmast Lighting, Amenity Lighting and Tunnel Lighting.

Material

Casing	: Pressure Casted Aluminium ADC12, Powder-Coated Finishing
Cover	: 5mm Tempered Glass
Bracket	: Mild Steel / Stainless Steel (Optional)
Dimming	: (Optional) 0-10V / DALI / Timer



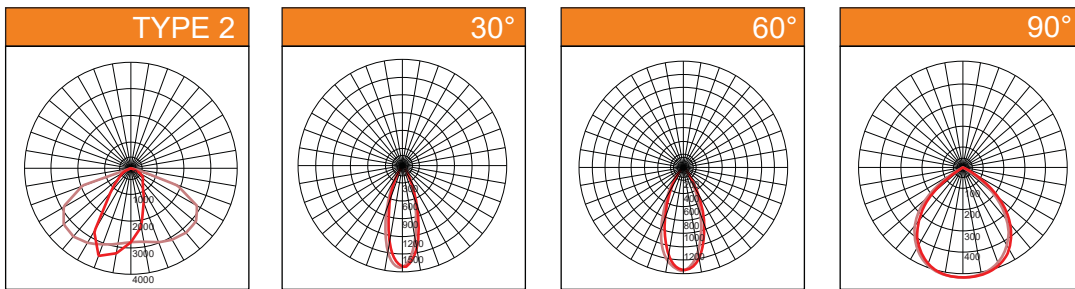
270°
Side locking bolts

Specifications

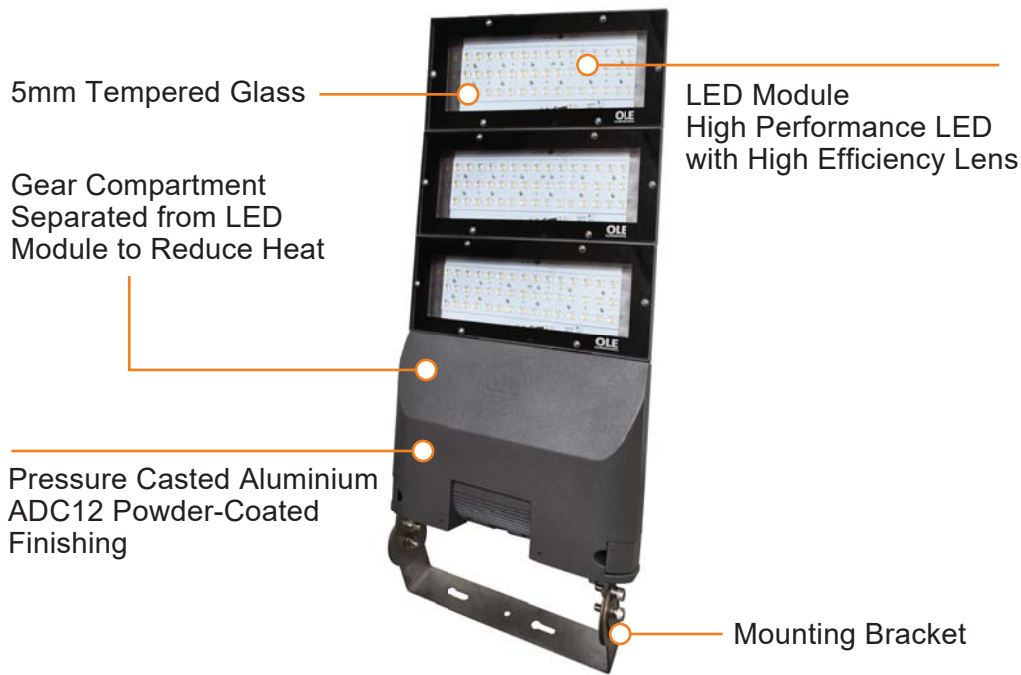
Model No.	Power	Input current	Weight	CCT	Efficacy	Lumen
OLE Dura WM120	120W	0.52A	11.2kg	<3500K	160 lm/W	19200 lm
				4000K	161 lm/W	19320 lm
				5000K	161 lm/W	19320 lm
				6000K	162 lm/W	19440 lm
OLE Dura WM180	180W	0.78A	14.1kg	<3500K	170 lm/W	30600 lm
				4000K	171 lm/W	30780 lm
				5000K	171 lm/W	30780 lm
				6000K	172 lm/W	30960 lm
OLE Dura WM240	240W	1.04A	14.1kg	<3500K	160 lm/W	38400 lm
				4000K	161 lm/W	38640 lm
				5000K	161 lm/W	38640 lm
				6000K	162 lm/W	38880 lm
OLE Dura WM300	300W	1.30A	17kg	<3500K	153 lm/W	45900 lm
				4000K	154 lm/W	46200 lm
				5000K	154 lm/W	46200 lm
				6000K	155 lm/W	46500 lm

* Flux data based on Ta = 25°C, CCT & Lumen +/-10%

Photometric Data



Feature Diagram



NEMA Socket (Optional)



Clip Lock Gear Tray for
Toolless Maintenance



Safety Switch Cut Off Power
Supply Once Cover Opened
(Optional)

Dimensions

OLE Dura WM120			
<p>Carton Size: (L)590x(W)428x(H)151</p>			
OLE Dura WM180			
<p>Carton Size: (L)753x(W)428x(H)151</p>			
OLE Dura WM240			
<p>Carton Size: (L)753x(W)428x(H)151</p>			
OLE Dura WM300			
<p>Carton Size: (L)930x(W)428x(H)151</p>			

OLE FLEXI MINI WM



IP66

IK09

220V
240V

CRI
>70



Features

Lumen Maintenance : L80 @ 50,000 hours
Working Temperature : -25°C ~ 50°C
Storage Temperature : -25°C ~ 80°C
Power Factor : >0.95 at Full Load
THD : <20% at Full Load
IP Protection : IP66 Optical Compartment

Material

Casing : Pressure Casted Aluminium ADC12,
Powder-Coated Finishing
Cover : High Transparency, Tempered Glass Cover
Bracket : Mild Steel / Stainless Steel (Optional)
Dimming : (Optional) 0-10V

Advantages

- Low temperature electronics that help to extend life span fast more than 50,000 hours.
- Support NEMA socket for smart control.

Application

Applicable for Tunnel Lighting, Amenity Lighting and Industrial Lighting.

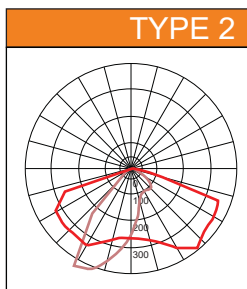


Specifications

Model No.	Power	Input current	Weight	CCT	Efficacy	Lumen
OLE Flexi Mini WM30	30W	0.13A	3.5kg	<3500K	160 lm/W	4800 lm
				4000K	165 lm/W	4950 lm
				5000K	165 lm/W	4950 lm
				6000K	166 lm/W	4980 lm
OLE Flexi Mini WM70	70W	0.30A	3.9kg	<3500K	150 lm/W	10500 lm
				4000K	150 lm/W	10500 lm
				5000K	150 lm/W	10500 lm
				6000K	151 lm/W	10570 lm

* Flux data based on Ta = 25°C, CCT & Lumen +/-10%

Photometric Data



Feature Diagram

Casing Material
Pressure Casted Aluminium ADC12,
Powder-Coated Finishing



NEMA Socket (Optional)

LED Module
High Performance LED with
High Efficiency Lens



LED Module

High Transparency
Tempered Glass Cover



Bracket

Dimensions

OLE Flexi Mini WM30 | OLE Flexi Mini WM70

Carton Size: (L)408x(W)200x(H)93



IP65



Features

Protection	: IP65
Input Voltage	: AC240V
Material	: Die-Cast Aluminium Housing ADC12
Reflector	: Highly Polished PC, External Driver
Carton	: 195x195x120mm (1pc per carton - 1.5kg/carton)

Advantages

The use of super bright LED as the light source. The light source uses the high efficiency energy- saving LED, waterproof and easy installation.

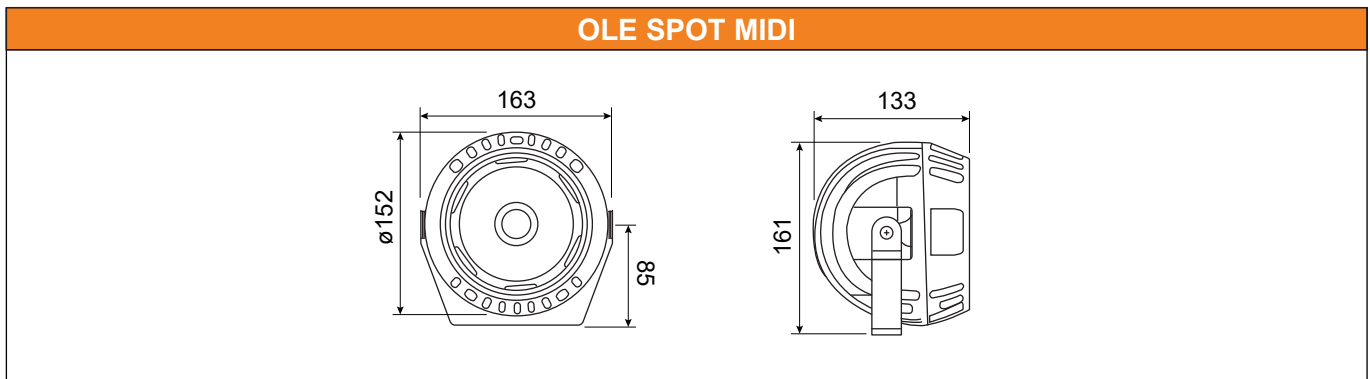
Application

Applicable for Trees, Building, landscape lighting and etc.

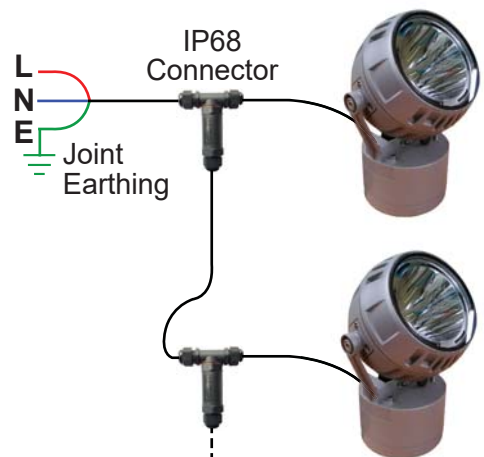
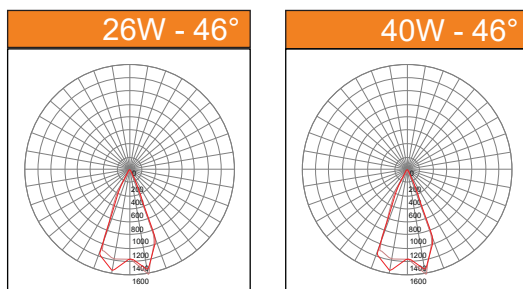
Specifications

Model No.	Power	Input Current	Lumen	CCT	Weight
OLE SPOT MIDI-12	12W	0.05A	1200lm	2200K-6000K	1.4KG
OLE SPOT MIDI-26	26W	0.11A	2600lm	2200K-6000K	1.4KG
OLE SPOT MIDI-40	40W	0.17A	4000lm	2200K-6000K	1.4KG

Dimensions



Photometric Data





IP65



Features

Protection	: IP65
Input Voltage	: AC240V
Material	: Die-Cast Aluminium Housing ADC12
Reflector	: Highly Polished PC, Built-In Constant Current Driver
Carton	: 160x170x180mm (1pc per carton - 2.4kg/carton)

Advantages

The use of super bright LED as the light source. The light source uses the high efficiency energy- saving LED, waterproof and easy installation.

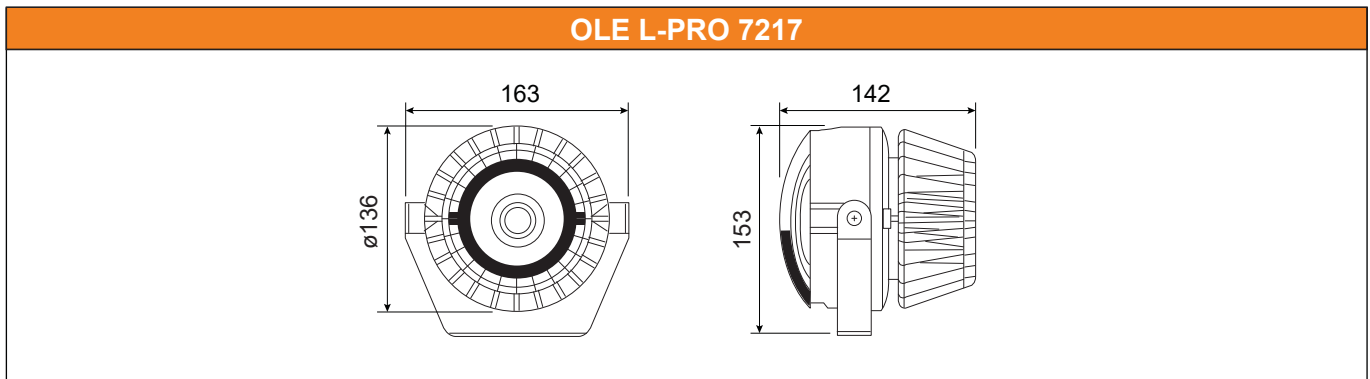
Application

Applicable for Trees, Building, landscape lighting and etc.

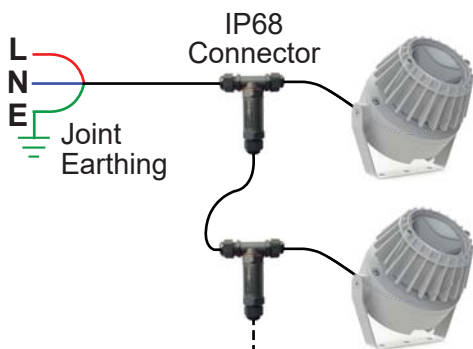
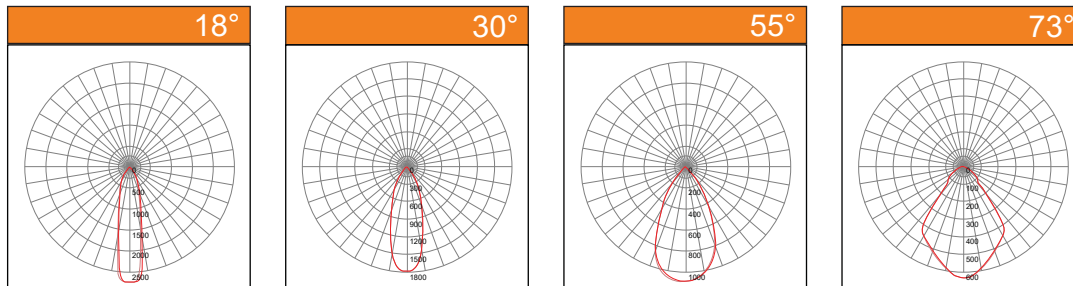
Specifications

Model No.	Power	Input Current	Lumen	CCT	Weight
OLE L-PRO 7217-12	12W	0.05A	1200lm	2200K-6000K	2.4KG
OLE L-PRO 7217-26	26W	0.11A	2600lm	2200K-6000K	2.4KG

Dimensions



Photometric Data





IP65



Features

Protection	: IP65
Input Voltage	: AC240V
Material	: Die-Cast Aluminium Housing ADC12
Reflector	: Highly Polished PC, Built-In Constant Current Driver
Carton	: 280x213x232mm (1pc per carton - 4.9kg/carton)

Advantages

The use of super bright LED as the light source. The light source uses the high efficiency energy- saving LED, waterproof and easy installation.

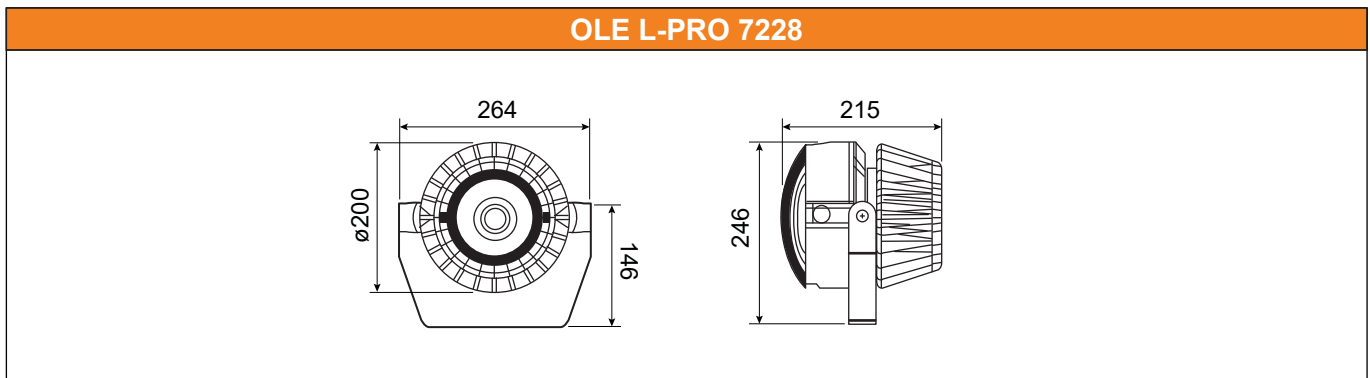
Application

Applicable for Trees, Building, landscape lighting and etc.

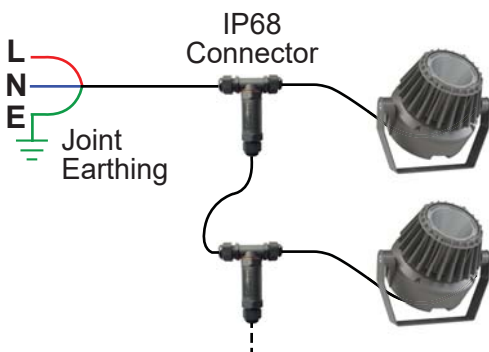
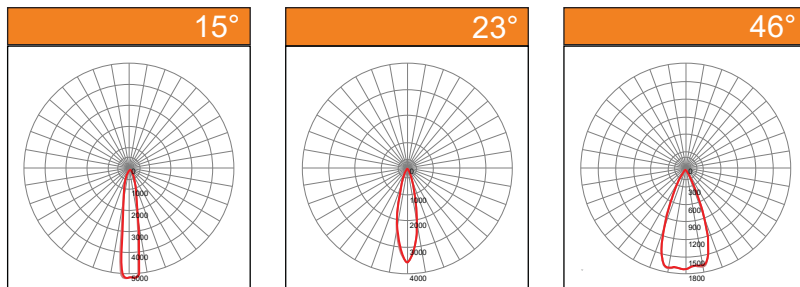
Specifications

Model No.	Power	Input Current	Lumen	CCT	Weight
OLE L-PRO 7228-38	38W	0.16A	3800lm	2200K-6000K	4.5KG
OLE L-PRO 7228-55	55W	0.23A	5500lm	2200K-6000K	4.5KG

Dimensions



Photometric Data





IP65



Features

Protection	: IP65
Input Voltage	: AC240V
Material	: Die-Cast Aluminium Housing ADC12
Reflector	: Highly Polished PC, Built-In Constant Current Driver
Carton	: 225x225x380mm (1pc per carton - 5.5kg/carton)

Advantages

The use of super bright LED as the light source. The light source uses the high efficiency energy- saving LED, waterproof and easy installation.

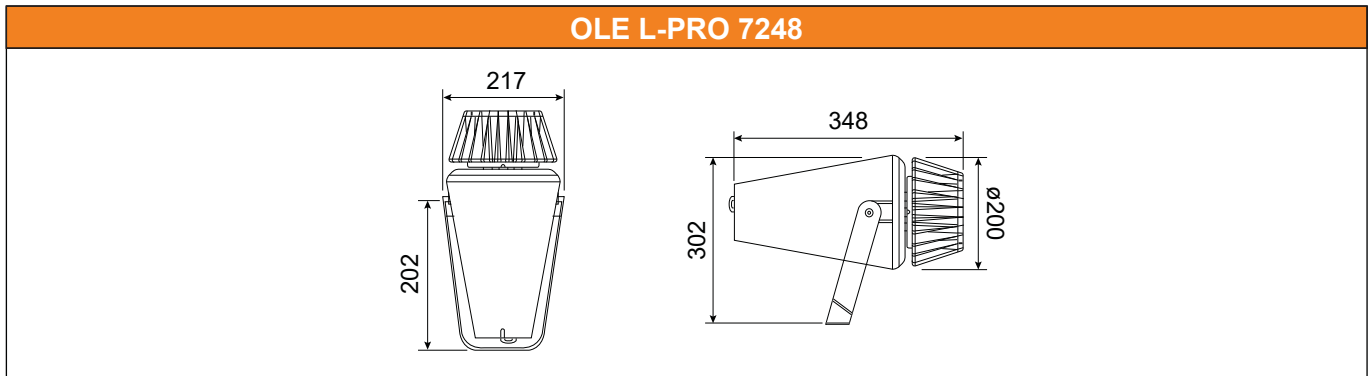
Application

Applicable for Trees, Building, landscape lighting and etc.

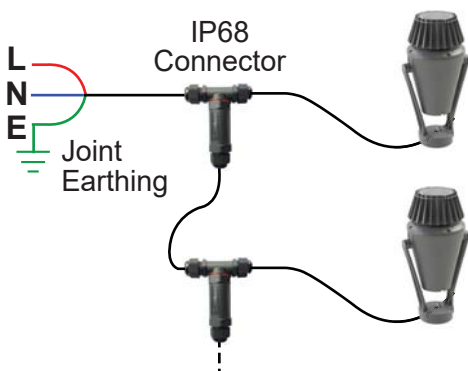
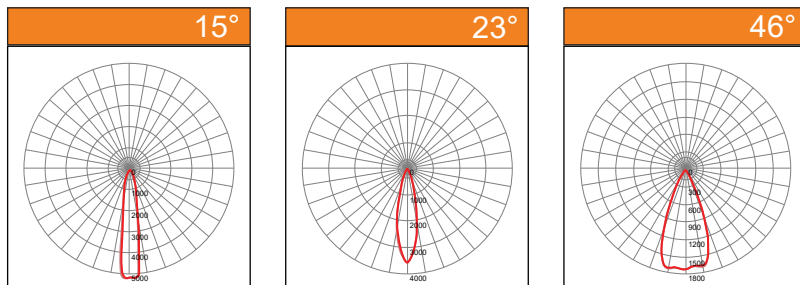
Specifications

Model No.	Power	Input Current	Lumen	CCT	Weight
OLE L-PRO 7248	55W	0.23A	5500lm	2200K-6000K	5KG

Dimensions



Photometric Data



OLE ATLAS



Features

Lumen Maintenance : L90 @ 60,000 hours
Working Temperature : -40°C ~ 50°C
Storage Temperature : -20°C ~ 80°C
Power Factor : >0.95 at Full Load
THD : <20% at Full Load
IP Protection : IP66 Optical Compartment

Advantages

It has a versatile light distribution. Can be use by both residential and commercial buildings for security, safety and beauty purposes.

Application

Applicable for Pedestrian Walkway, Car Park, Garden Lighting, Area Lighting and others.

Certification

Compliance to LED Module: IEC62031.

Material

Casing : Extrusion Aluminium AA 6063-T5 with Outdoor Epoxy Powder Coated
Lens : Polycarbonate
Flange Plate: Aluminium
Dimming : (Optional) 0-10V / DALI / Timer

Specifications

Model No.	Power	Lamp	Input current	Weight	Color	Efficacy	Lumen
OLE ATLAS S-60W-3M	60W	1 Module	0.26A	32.1kg	3500K	175 lm/W	10500 lm
OLE ATLAS S-60W-4M	60W	1 Module	0.26A	40.06kg	6000K	195 lm/W	11700 lm
OLE ATLAS S-120W-5M	120W	2 Modules	0.52A	48.58kg	3500K	175 lm/W	21000 lm
OLE ATLAS S-120W-6M	120W	2 Modules	0.52A	56.55kg	6000K	195 lm/W	23400 lm
OLE ATLAS D-60W-3M	120W	2 Modules	0.52A	40.3kg	3500K	175 lm/W	21000 lm
OLE ATLAS D-60W-4M	120W	2 Modules	0.52A	48.27kg	6000K	195 lm/W	23400 lm
OLE ATLAS D-120W-5M	240W	4 Modules	1.04A	56.23kg	3500K	175 lm/W	21000 lm
OLE ATLAS D-120W-6M	240W	4 Modules	1.04A	64.2kg	6000K	195 lm/W	23400 lm

Photometric Data



Feature Diagram



LED Module



Optional for Tilting Angle 10°

Dimensions

OLE ATLAS S-60W	OLE ATLAS S-120W
<p>Packing Size: (3M)3015x617x165 / (4M)4015x617x165</p> <p>Tilting Angle (Optional) *setting in factory</p> <p>Flange Plate</p>	<p>Packing Size: (5M)5015x917x165 / (6M)6015x917x165</p> <p>Tilting Angle (Optional) *setting in factory</p> <p>Flange Plate</p>
OLE ATLAS D-60W	OLE ATLAS D-120W
<p>Packing Size: (3M)3015x1128x165 / (4M)4015x1128x165</p> <p>Tilting Angle (Optional) *setting in factory</p> <p>Flange Plate</p>	<p>Packing Size: (5M)5015x1728x165 / (6M)6015x1728x165</p> <p>Tilting Angle (Optional) *setting in factory</p> <p>Flange Plate</p>

OLE ALPHA



OLE ALPHA 1

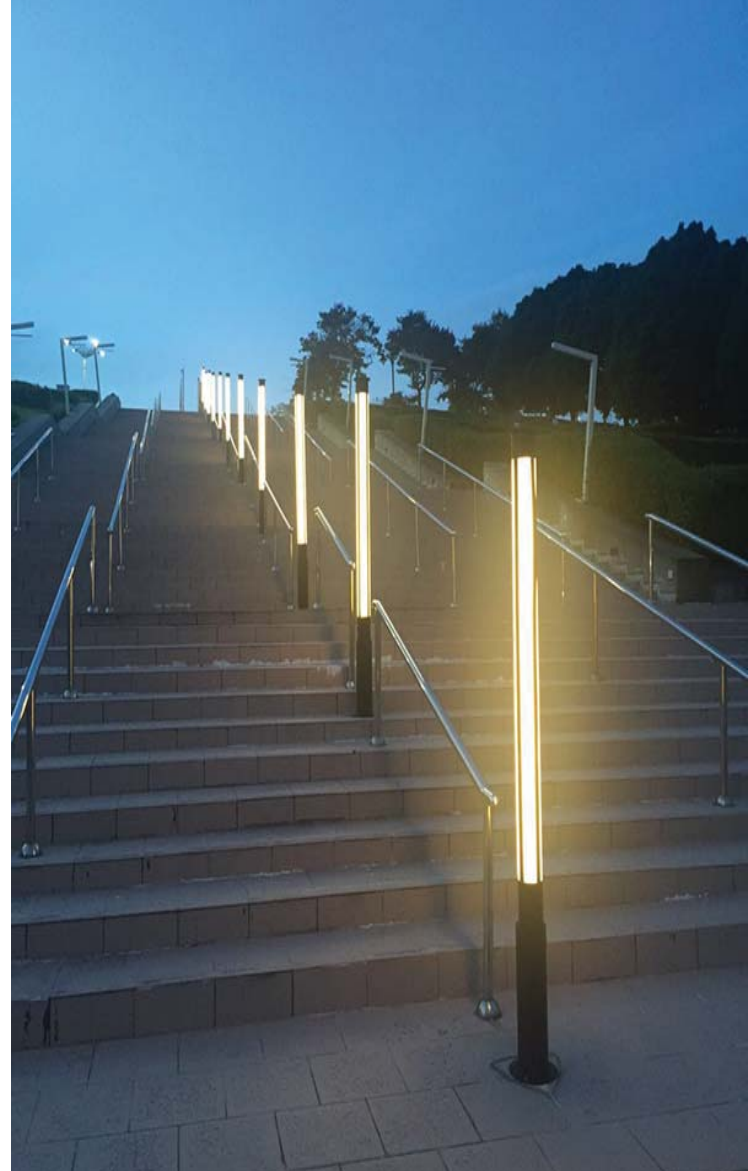


OLE ALPHA 2

IP65

220V
240V

CRI
>70



Features

Lumen Maintenance : L90 @ 60,000 hours
Working Temperature : -40°C ~ 50°C
Storage Temperature : -20°C ~ 80°C
Power Factor : >0.95 at Full Load
THD : <20% at Full Load

Material

Casing : Extrusion Aluminium AA 6063-T5 with
Outdoor Epoxy Powder Coated
Cover : Acrylic
Flange Plate: Aluminium
Dimming : (Optional) 0-10V / DALI / Timer

Advantages

It has a versatile light distribution. Can be use by both residential and commercial buildings for security, safety and beauty purposes.

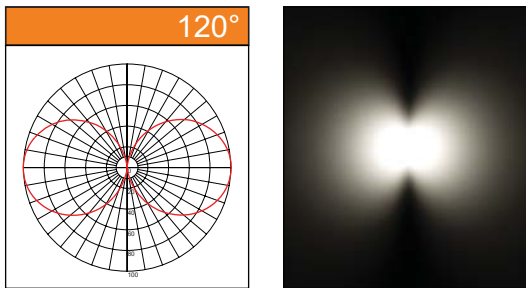
Application

Applicable for Pedestrian Walkway, Car Park, Garden Lighting, Area Lighting and others.

Specifications

Model No.	Power	Lamp	Input current	Weight	Color	Efficacy	Lumen
OLE ALPHA 1-24W-2M	24W	LED Strip	0.10A	13.5kg	3500K-6000K	67 lm/W	1600 lm
OLE ALPHA 1-48W-3M	48W	LED Strip	0.20A	20.25kg	3500K-6000K	67 lm/W	3200 lm
OLE ALPHA 2-48W-2M	48W	LED Strip	0.20A	15.5kg	3500K-6000K	67 lm/W	3200 lm
OLE ALPHA 2-96W-3M	96W	LED Strip	0.41A	21.97kg	3500K-6000K	67 lm/W	6400 lm

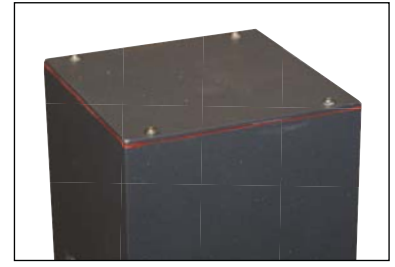
Photometric Data



Feature Diagram



Casing Material
Extrusion Aluminium AA 6063-T5 with
Outdoor Epoxy Powder Coated



Front & Back Light / 4 Sided
Light Emitting Surface

Dimensions

OLE ALPHA 1-24W-2M	OLE ALPHA 1-48W-3M
<p>Packing Size: 2015x142x142</p> <p>(Front & Back Light Emitting Surface)</p>	<p>Packing Size: 3015x142x142</p> <p>(Front & Back Light Emitting Surface)</p>
OLE ALPHA 2-48W-2M	OLE ALPHA 2-96W-3M
<p>Packing Size: 2015x142x142</p> <p>(4 Sided Light Emitting Surface)</p>	<p>Packing Size: 3015x142x142</p> <p>(4 Sided Light Emitting Surface)</p>

OLE ASO



IP65	220V 240V	CRI >70	
------	--------------	------------	--



Features

Lumen Maintenance : L90 @ 60,000 hours
 Working Temperature : -40°C ~ 50°C
 Storage Temperature : -20°C ~ 80°C
 Power Factor : >0.95 at Full Load
 THD : <20% at Full Load

Material

Casing : Extrusion Aluminium AA 6063-T5 with
 Outdoor Epoxy Powder Coated
 Cover : Tempered Glass
 Flange Plate : Aluminium
 Dimming : (Optional) 0-10V / DALI / Timer

Advantages

It has a versatile light distribution. Can be use by both residential and commercial buildings for security, safety and beauty purposes.

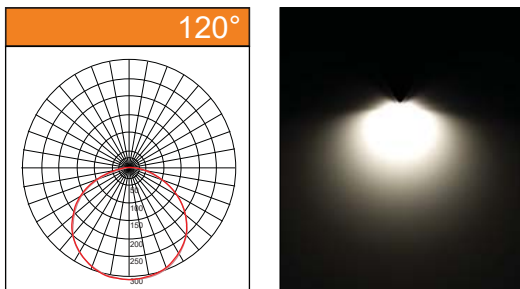
Application

Applicable for Pedestrian Walkway, Car Park, Garden Lighting, Area Lighting and others.

Specifications

Model No.	Power	Lamp	Input current	Weight	Color	Efficacy	Lumen
OLE ASO S-30W-3M	30W	1 Module	0.13A	17.25kg	3500K-6000K	100 lm/W	3000 lm
OLE ASO S-30W-4M	30W	1 Module	0.13A	21.83kg	3500K-6000K	100 lm/W	3000 lm
OLE ASO S-30W-5M	30W	1 Module	0.13A	26.52kg	3500K-6000K	100 lm/W	3000 lm
OLE ASO S-30W-6M	30W	1 Module	0.13A	31.15kg	3500K-6000K	100 lm/W	3000 lm
OLE ASO D-30W-3M	30Wx2	2 Modules	0.26A	19.75kg	3500K-6000K	100 lm/W	6000 lm
OLE ASO D-30W-4M	30Wx2	2 Modules	0.26A	25.18kg	3500K-6000K	100 lm/W	6000 lm
OLE ASO D-30W-5M	30Wx2	2 Modules	0.26A	28.4kg	3500K-6000K	100 lm/W	6000 lm
OLE ASO D-30W-6M	30Wx2	2 Modules	0.26A	32.8kg	3500K-6000K	100 lm/W	6000 lm

Photometric Data

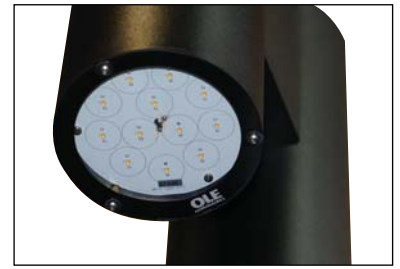


Feature Diagram



LED Module
High Performance LED
with High Efficiency Lens

Casing Material
Extrusion Aluminium AA 6063-T5 with
Outdoor Epoxy Powder Coated



LED Module



Dimensions

OLE ASO S	OLE ASO D
Packing Size: (3M)3015x142x142 / (4M)4015x142x142 / (5M)5015x142x142 / (6M)6015x142x142	Packing Size: (3M)3015x142x142 / (4M)4015x142x142 / (5M)5015x142x142 / (6M)6015x142x142

OLE ALBE



IP65

220V
240V

CRI
>70



Features

Lumen Maintenance : L90 @ 60,000 hours
Working Temperature : -40°C ~ 50°C
Storage Temperature : -20°C ~ 80°C
Power Factor : >0.95 at Full Load
THD : <20% at Full Load

Material

Casing : Extrusion Aluminium AA 6063-T5 with
Outdoor Epoxy Powder Coated
Cover : Acrylic
Flange Plate : Stainless Steel
Dimming : (Optional) 0-10V / DALI / Timer

Advantages

Attractive rectangular bollards that provides excellent glare control.

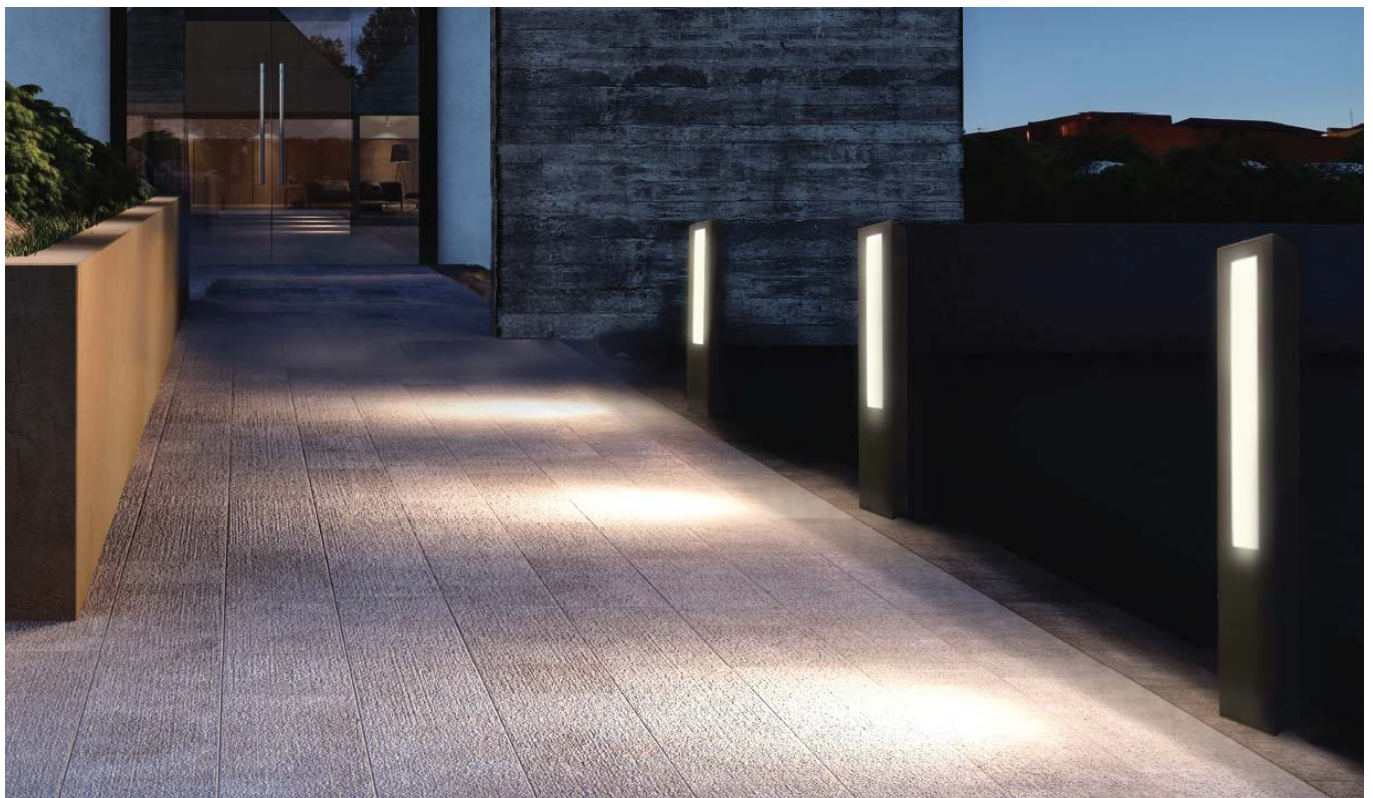
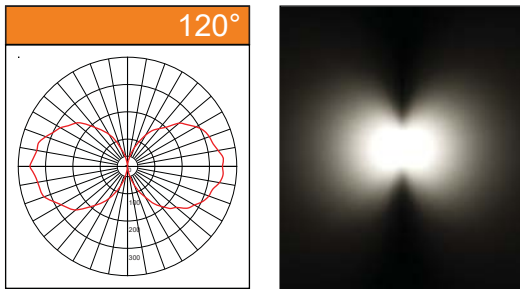
Application

Applicable for Pedestrian Walkway, Car Park, Garden Lighting, Area Lighting and others.

Specifications

Model No.	Power	Lamp	Input current	Weight	Color	Efficacy	Lumen
OLE ALBE	30W	LED	0.13A	7.7kg	3500K-6000K	80 lm/W	2400 lm

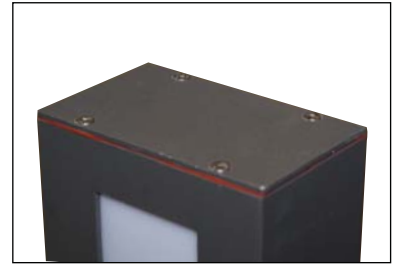
Photometric Data



Feature Diagram



Casing Material
Extrusion Aluminum AA 6063-T5 with
Outdoor Epoxy Powder Coated

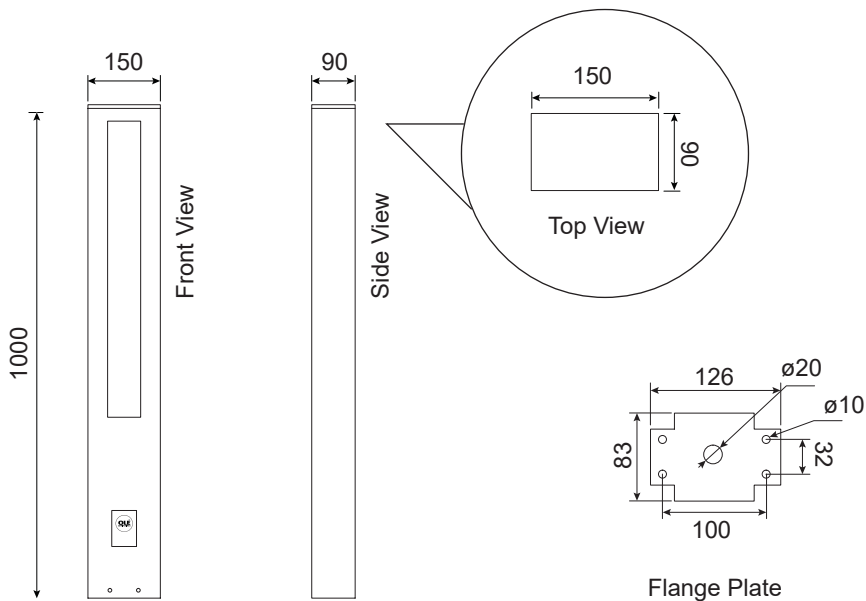


Front & Back Light Emitting
Surface

Dimensions

OLE ALBE

Packing Size: 1015x165x105



(Front & Back Light Emitting Surface)

OLE ARIA

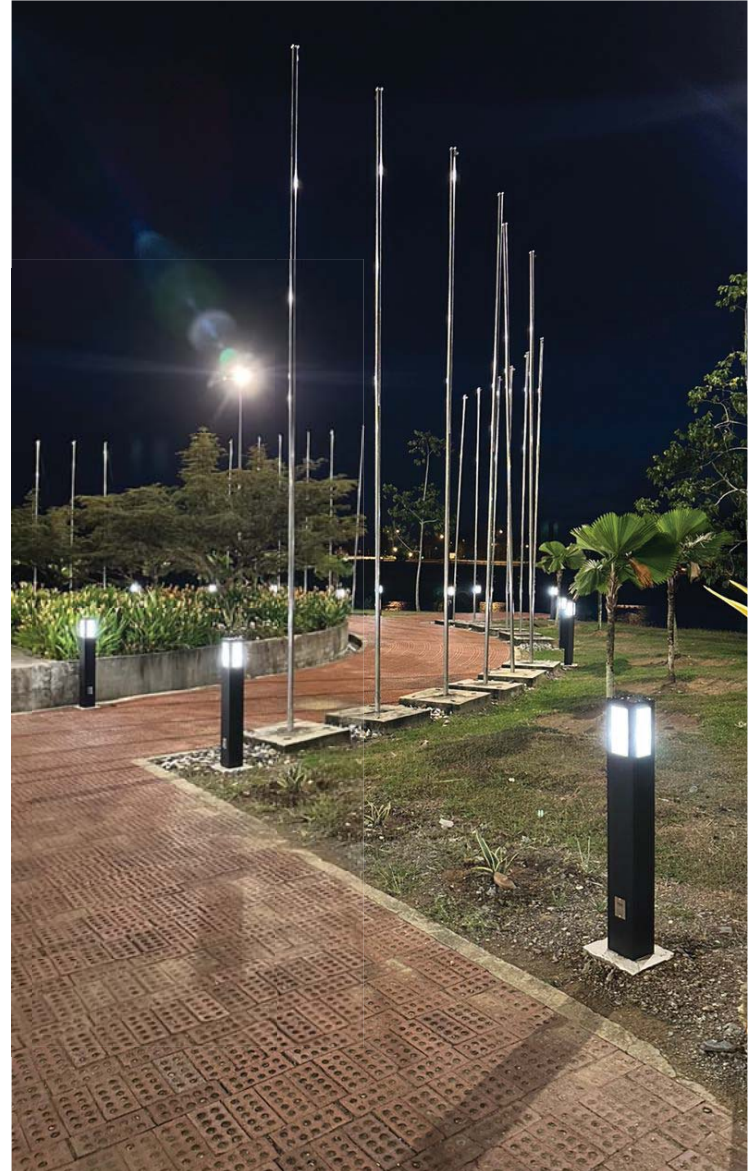


OLE ARIA S



OLE ARIA M

IP65	220V 240V	CRI >70	
------	--------------	------------	--



Features

Lumen Maintenance : L90 @ 60,000 hours
Working Temperature : -40°C ~ 50°C
Storage Temperature : -20°C ~ 80°C
Power Factor : >0.95 at Full Load
THD : <20% at Full Load

Material

Casing : Extrusion Aluminium AA 6063-T5 with Outdoor Epoxy Powder Coated
Cover : Acrylic
Flange Plate: Stainless Steel
Dimming : (Optional) 0-10V / DALI / Timer

Advantages

This bollard's light distribution is forward projecting, and therefore provides an excellent solution.

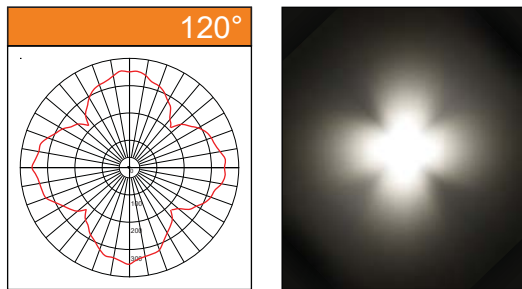
Application

Applicable for Illuminating Pathways, Driveways, Car Park, Garden Lighting, Area Lighting and etc.

Specifications

Model No.	Power	Lamp	Input current	Weight	Color	Efficacy	Lumen
OLE ARIA S	9W	LED	0.03A	6.05kg	3500K-6000K	80 lm/W	720 lm
OLE ARIA M	15W	LED	0.06A	6.05kg	3500K-6000K	80 lm/W	1200 lm

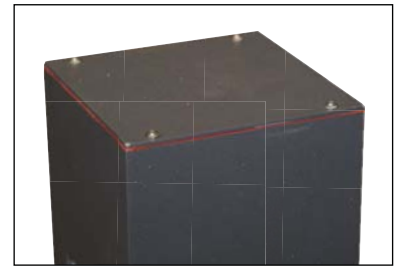
Photometric Data



Feature Diagram

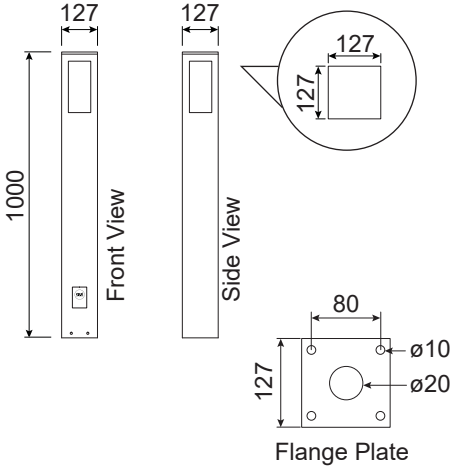
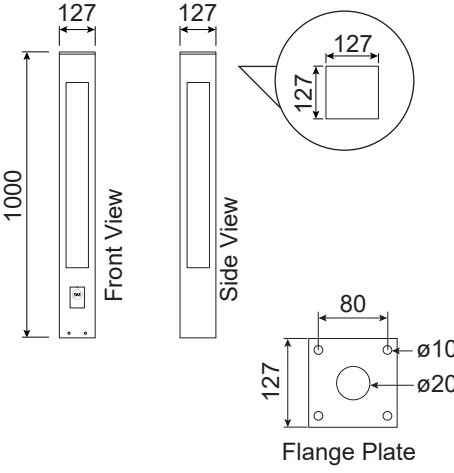


Casing Material
Extrusion Aluminium AA 6063-T5 with
Outdoor Epoxy Powder Coated



4 Sided Light Emitting
Surface

Dimensions

OLE ARIA S	OLE ARIA M
<p>Packing Size: 1015x142x142</p>  <p>(4 Sided Light Emitting Surface)</p>	<p>Packing Size: 1015x142x142</p>  <p>(4 Sided Light Emitting Surface)</p>



Features

- Lumen Maintenance : L90 @ 60,000 hours
- Working Temperature : -40°C ~ 40°C
- Storage Temperature : -20°C ~ 80°C
- Power Factor : >0.95 at Full Load
- THD : <20% at Full Load
- IP Protection : IP66 Optical Compartment

Material

- Casing : High Purity Extrusion Aluminium & Galvanized Steel with Polyester Epoxy Powder Coated Finishing
- Cover : Polycarbonate
- Dimming : (Optional) 0-10V / DALI / Timer

Advantages

- Durable, weatherproof and suitable for various mounting method.
- Modular based, great for varied mounting heights from 4m up to 10m height.

Application

Applicable for High Ceiling Corridor, Multipurpose Hall, Warehouse and Factories.

Certification

Compliance to LED Module: IEC62031.



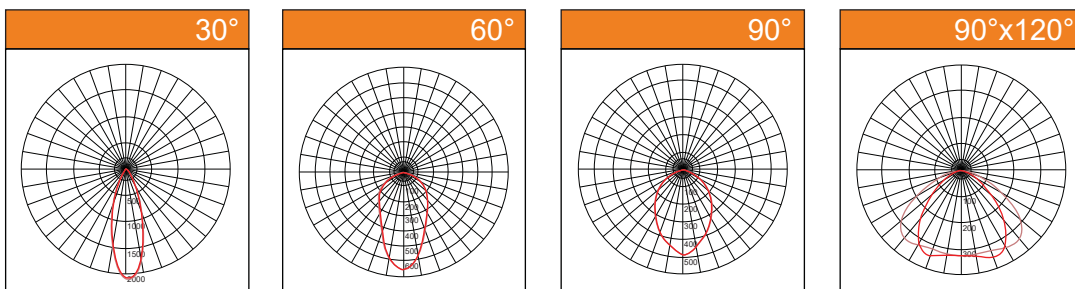
Hinged Compartment for Easy Installation and Maintenance

Specifications

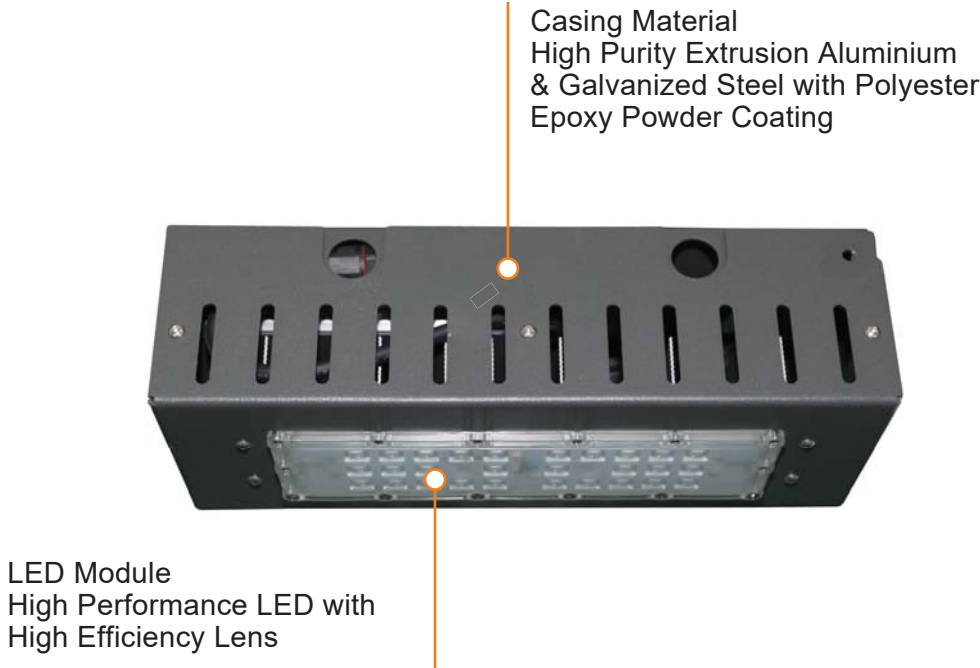
Model No.	Power	Input current	Weight	CCT	Efficacy	Lumen
OLE NEP SLB40	40W	0.17A	3.45kg	<3500K	180 lm/W	7200 lm
				4000K	185 lm/W	7400 lm
				5000K	190 lm/W	7600 lm
				6000K	195 lm/W	7800 lm
OLE NEP SLB60	60W	0.26A	3.45kg	<3500K	175 lm/W	10500 lm
				4000K	182 lm/W	10920 lm
				5000K	185 lm/W	11100 lm
				6000K	190 lm/W	11400 lm
OLE NEP SLB120	120W	0.50A	5.3kg	<3500K	175 lm/W	21000 lm
				4000K	182 lm/W	21840 lm
				5000K	185 lm/W	22200 lm
				6000K	190 lm/W	22800 lm
OLE NEP SLB180	180W	0.78A	6.75kg	<3500K	175 lm/W	31500 lm
				4000K	182 lm/W	32760 lm
				5000K	185 lm/W	33300 lm
				6000K	190 lm/W	34200 lm
OLE NEP SLB240	240W	1.04A	7.5kg	<3500K	175 lm/W	42000 lm
				4000K	182 lm/W	43680 lm
				5000K	185 lm/W	44400 lm
				6000K	190 lm/W	45600 lm

**Reported CCT and System Lumen may have a tolerance of +/-10%*

Photometric Data



Feature Diagram



LED Module

Dimensions

OLE NEP SLB40	OLE NEP SLB60	OLE NEP SLB120
<p>Carton Size: (L)385x(W)345x(H)150</p>	<p>Carton Size: (L)385x(W)345x(H)150</p>	<p>Carton Size: (L)443x(W)296x(H)146</p>
OLE NEP SLB180	OLE NEP SLB240	
<p>Carton Size: (L)385x(W)480x(H)160</p>	<p>Carton Size: (L)515x(W)550x(H)160</p>	



IP66	220V 240V	CRI >70	
-------------	----------------------	-----------------------	---

Features

Lumen Maintenance : L90 @ 60,000 hours
 Working Temperature : -40°C ~ 40°C
 Storage Temperature : -20°C ~ 80°C
 Power Factor : >0.95 at Full Load
 THD : <20% at Full Load
 IP Protection : IP66 Optical Compartment

Material

Casing : High Purity Extrusion Aluminium & Galvanized Steel with Polyester Epoxy Powder Coated Finishing
 Cover : Polycarbonate
 Dimming : (Optional) 0-10V / DALI / Timer

Advantages

- Recessed mounting method suitable for low or high ceiling semi outdoor application.
- Widely used on petrol stations and toll plazas.

Application

Applicable for High Ceiling Corridor, Multipurpose Hall, Warehouse, Factories, Petrol Station, Toll Plaza and High Ceiling Lobbies.

Certification

Compliance to LED Module: IEC62031.



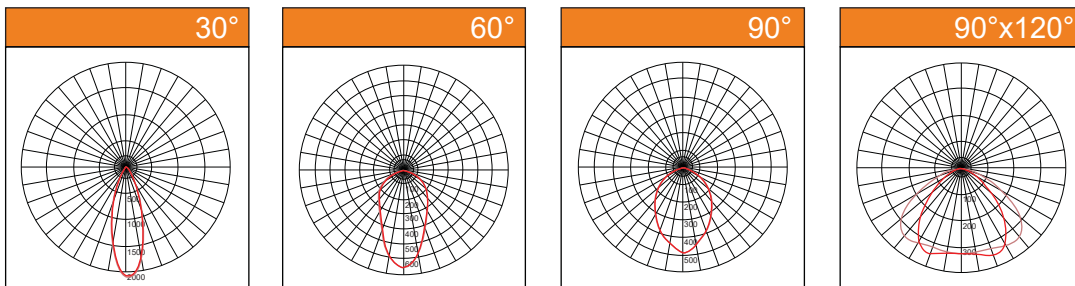
Hinged Compartment for Easy Installation and Maintenance

Specifications

Model No.	Power	Input current	Weight	CCT	Efficacy	Lumen
OLE NEP RLB60	60W	0.25A	4.65kg	<3500K	175 lm/W	10500 lm
				4000K	182 lm/W	10920 lm
				5000K	185 lm/W	11100 lm
				6000K	195 lm/W	11700 lm
OLE NEP RLB120	120W	0.52A	5.55kg	<3500K	175 lm/W	21000 lm
				4000K	182 lm/W	21840 lm
				5000K	185 lm/W	22200 lm
				6000K	195 lm/W	23400 lm
OLE NEP RLB180	180W	0.78A	6.75kg	<3500K	175 lm/W	31500 lm
				4000K	182 lm/W	32760 lm
				5000K	185 lm/W	33300 lm
				6000K	195 lm/W	35100 lm
OLE NEP RLB240	240W	1.04A	8.1kg	<3500K	175 lm/W	42000 lm
				4000K	182 lm/W	43680 lm
				5000K	185 lm/W	44400 lm
				6000K	195 lm/W	46800 lm

* Reported CCT and System Lumen may have a tolerance of +/-10%

Photometric Data



Feature Diagram

Casing Material
High Purity Extrusion Aluminium
& Galvanized Steel with Polyester
Epoxy Powder Coating



LED Module



LED Module
High Performance LED with
High Efficiency Lens

Dimensions

OLE NEP RLB60	OLE NEP RLB120
<p>Carton Size: (L)476x(W)456x(H)146</p>	<p>Carton Size: (L)476x(W)456x(H)146</p>
OLE NEP RLB180	OLE NEP RLB240
<p>Carton Size: (L)476x(W)456x(H)146</p>	<p>Carton Size: (L)476x(W)456x(H)146</p>



IP65

IK09

220V
240V

CRI
>70



Features

Lumen Maintenance : L70 @ 50,000 hours
Ambient Temperature : -40°C ~ 50°C
Input Frequency : 50/60Hz
Power Factor : >0.95 at Full Load
Surge Protection : 6kV

Housing : Die-cast Aluminum
Diffuser : Anti-UV polycarbonate optical material
Dimming : 0-10V Dimming

Advantages

- Professional fin-shaped die-cast aluminum heat sink, excellent for heat dissipation.
- High Bay product can be optional to add lighting sensor.

Application

Applicable for High Ceiling Corridor, Multipurpose Hall, Warehouse and Factories.

Certification

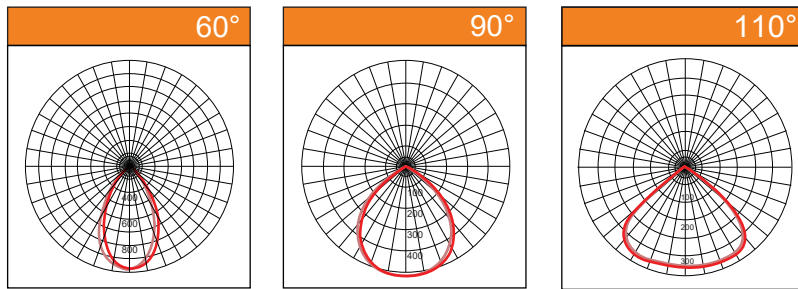
Compliance to MS IEC 60598-1-2 : 2020

Specifications

Model No.	Power(Tunable)	Net weight	Gross weight	CCT	Efficacy	Lumen
OLE UFO-F-100W	100/80/50W	1.4kg 1.6kg	1.8kg 2.1kg	2700K- 6500K	150 lm/W (170 lm/W Optional)	15000 lm 12000 lm 7500 lm
OLE UFO-F-150W	150/100/80W	1.6kg 1.9kg	2.1kg 2.4kg	2700K- 6500K	150 lm/W (170 lm/W Optional)	22500 lm 15000 lm 12000 lm
OLE UFO-F-200W	200/150/100W	1.9kg 2.3kg	2.4kg 3.2kg	2700K- 6500K	150 lm/W (170 lm/W Optional)	30000 lm 22500 lm 15000 lm
OLE UFO-F-240W	240/200/150W	2.3kg	3.2kg	2700K- 6500K	150 lm/W (170 lm/W Optional)	36000 lm 30000 lm 22500 lm

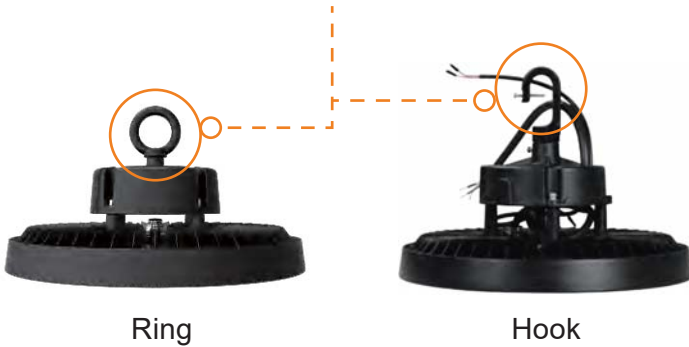
* Reported CCT and System Lumen may have a tolerance of +/-10%. Lumen values are based on 150lm/W

Photometric Data



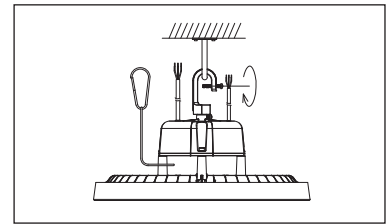
Feature Diagram

Hanging ring and hook optional, suitable for pendant mount.

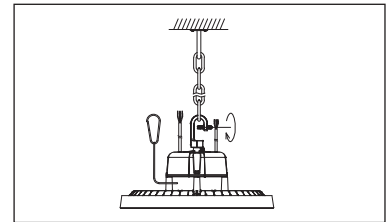


Ring

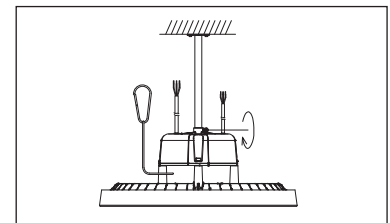
Hook



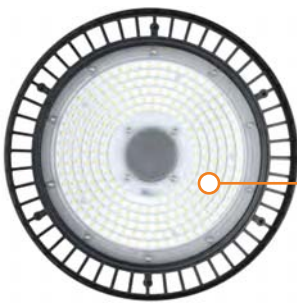
Top Mounting



Chain Mounting



Connecting Rod Mounting



Lens made of anti-UV PC optical material, great impact resistance with IK09 certified, high visual comfort and uniform lighting distribution.

Dimensions

OLE UFO-F-100W	OLE UFO-F-150W
<p>Packing Size: (L)250x(W)250x(H)160/(L)300x(W)300x(H)165</p>	<p>Packing Size: (L)300x(W)300x(H)165/(L)335x(W)335x(H)165</p>
OLE UFO-F-200W	OLE UFO-F-240W
<p>Packing Size: (L)335x(W)335x(H)165/(L)410x(W)410x(H)170</p>	<p>Packing Size: (L)410x(W)410x(H)170</p>



IP65

IK08

**200Vac
240Vac**

**CRI
>70**

Features

Lumen Maintenance : L70 @ 50,000 hours
Working Temperature : -30°C ~ 50°C
Working Humidity : 15%-90%
Power Factor : >0.95 at Full Load
Material : Aluminum + PC

Driver : Lifud/Moso Standard/Sosen
/Philips Optional
Output Voltage : 180V-260V
Driver Type : Constant current (CC)
Surge Protection : 4KV

Advantages

Compatible with microwave motion sensor and smart Bluetooth microwave motion sensor.

Application

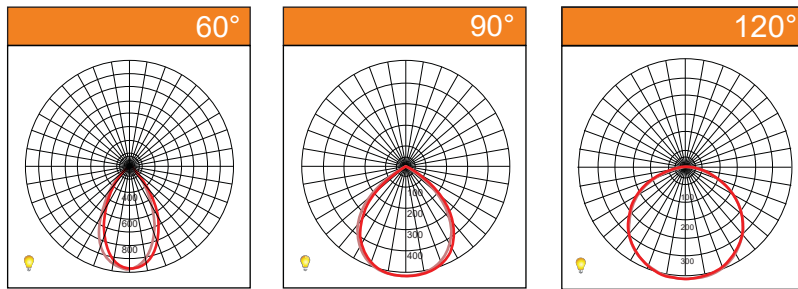
Applicable for High Ceiling Corridor, Multipurpose Hall, Warehouse and Factories.

Specifications

Model No.	Power	Net weight	Gross weight	CCT	Efficacy	Lumen
OLE HB-22-100W	100W	1.9kg	2.5kg	3000K- 6500K Optional	150 lm/W 170 lm/W 190 lm/W	15000 lm 17000 lm 19000 lm
OLE HB-22-150W	150W	2.2kg	3.0kg	3000K- 6500K Optional	150 lm/W 170 lm/W 190 lm/W	22500 lm 25500 lm 28500 lm
OLE HB-22-200W	200W	2.96kg	3.9kg	3000K- 6500K Optional	150 lm/W 170 lm/W 190 lm/W	30000 lm 34000 lm 38000 lm
OLE HB-22-240W	240W	2.96kg	3.9kg	3000K- 6500K Optional	150 lm/W 170 lm/W 190 lm/W	36000 lm 40800 lm 45600 lm

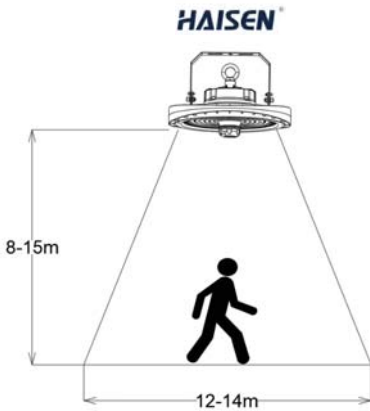
** Reported CCT and System Lumen may have a tolerance of +/-10%*

Photometric Data



Feature Diagram

Microwave sensing range:
Standard Haisen sensor



Microwave motion sensor



U-bracket installation



Microwave motion sensor



Aluminum anti-glare cover

- 12VDC Smart PIR Sensor With Bluetooth Sigmesh
- Wireless version, APP control, group control
- PIR high bay sensor head
- Bi-level dimming, daylight, threshold and dusk/dawn function
- Easy install and replace

Dimensions

OLE HB-22-100W	OLE HB-22-150W
<p>Packing Size: (L)305x(W)305x(H)160</p>	<p>Packing Size: (L)345x(W)345x(H)160</p>
OLE HB-22-200W	OLE HB-22-240W
<p>Packing Size: (L)385x(W)385x(H)160</p>	<p>Packing Size: (L)385x(W)385x(H)160</p>

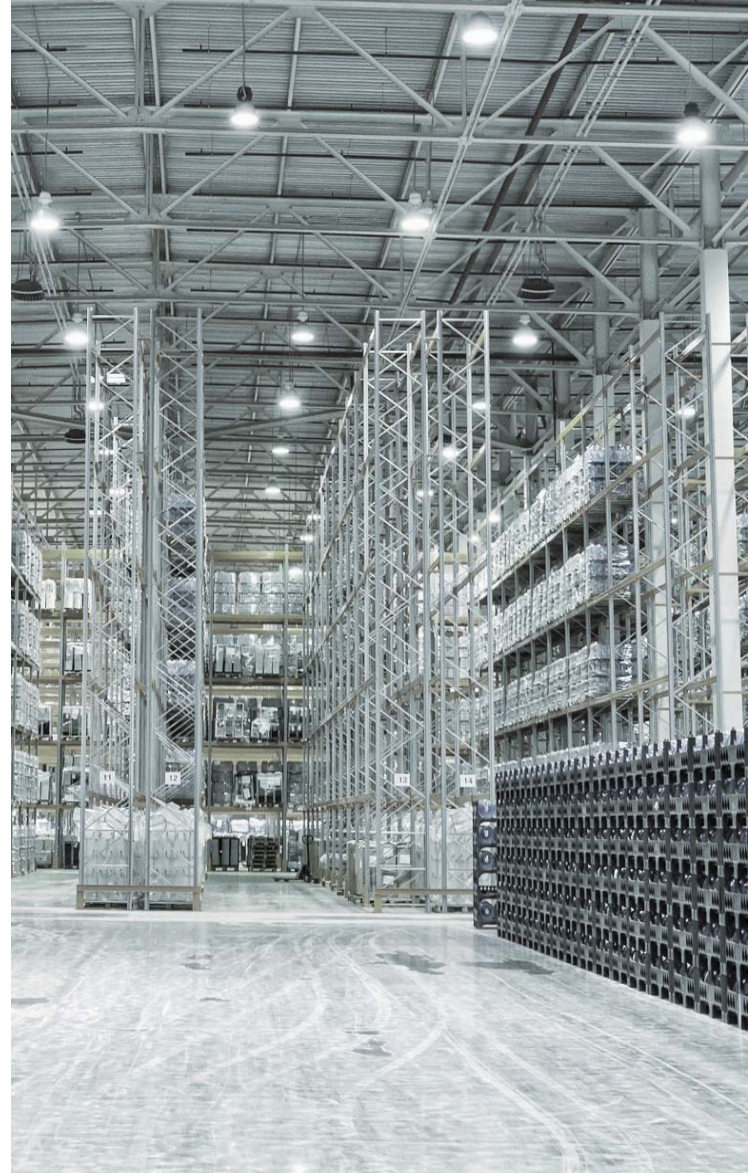


IP65

IK08

90Vac
305Vac

CRI
>70



Features

Lumen Maintenance	: L70 @ 50,000 hours
Working Temperature	: -30°C ~ 45°C
Working Humidity	: 15%-90%
Power Factor	: >0.95 at Full Load

Advantages

- Available to install bracket for wall mounting.
- Ring outfit mounting method for easy installation at high mounting areas.

Application

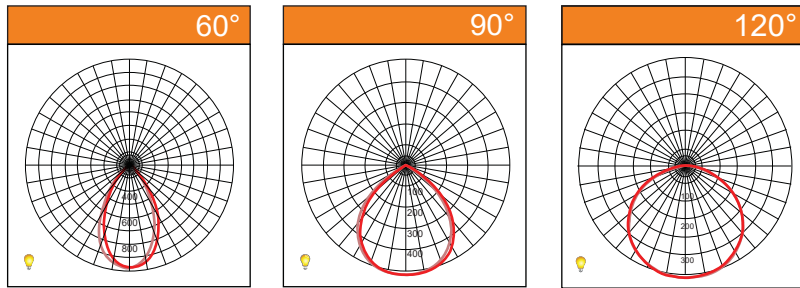
Applicable for High Ceiling Corridor, Multipurpose Hall, Warehouse and Factories.

Specifications

Model No.	Power	Net weight	Gross weight	CCT	Efficacy	Lumen
OLE HB-20-300W	300W	3.66kg	4.66kg	3000K 4000K 5000K 5700K	140 lm/W 170 lm/W	42000 lm 51000 lm
OLE HB-22-400W	400W	12.01kg	13.11kg	3000K 4000K 5000K 5700K	140 lm/W 170 lm/W	56000 lm 68000 lm
OLE HB-22-500W	500W	12.01kg	13.11kg	3000K 4000K 5000K 5700K	140 lm/W 170 lm/W	70000 lm 85000 lm

** Reported CCT and System Lumen may have a tolerance of +/-10%*

Photometric Data



Feature Diagram



Ring Outfit Mounting



Wall Bracket Mounting

Dimensions

OLE HB-20-300W	OLE HB-20-400W
Packing Size: (L)410x(W)410x(H)150	Packing Size: (L)520x(W)520x(H)235

OLE HB-20-500W
Packing Size: (L)520x(W)520x(H)235



OLE HB-03



IP65	IK08	100Vac 277Vac	CRI >70
------	------	------------------	------------

Features

Lumen Maintenance : L70 @ 50,000 hours
 Working Temperature : -30°C ~ 40°C
 Working Humidity : 15%-90%
 Power Factor : >0.95 at Full Load
 Material : Aluminum + PC

Driver : Moso Standard/Optional others
 Output Voltage : 180V-260V
 Driver Type : Constant current (CC)
 Surge Protection : 4KV

Advantages

- Wide wattage range from 80W - 280W.
- Private heavy design mold appearance, multiple molds, high quality.
- Optimized optical design, the light output is uniform.

Application

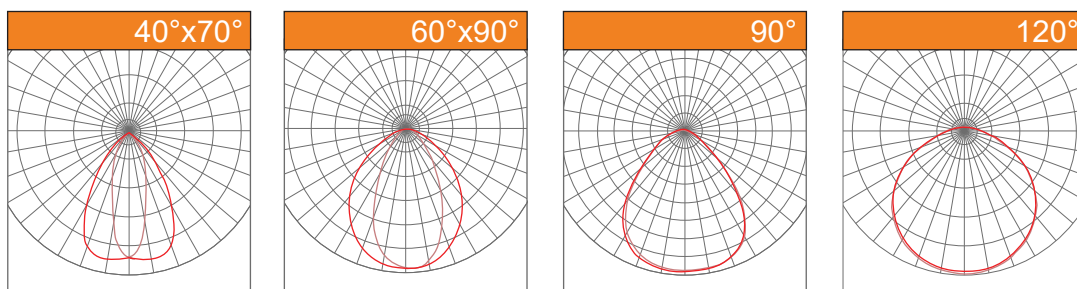
Applicable for Tunnel Lighting, ideal for Industrial Plants, Production Workshops, Supermarkets, Sports and Entertainment Venues, Warehouses and etc.

Specifications

Model No.	Power	Net weight	Gross weight	CCT	Efficacy	Lumen
OLE HB-03-80W	80W	6.76kg	7.9kg	3000K-5700K	150 lm/W	12000 lm
OLE HB-03-100W	100W	6.76kg	7.9kg	3000K-5700K	150 lm/W	15000 lm
OLE HB-03-120W	120W	10kg	11.44kg	3000K-5700K	150 lm/W	18000 lm
OLE HB-03-150W	150W	10kg	11.44kg	3000K-5700K	150 lm/W	22500 lm
OLE HB-03-180W	180W	10.52kg	12.08kg	3000K-5700K	150 lm/W	27000 lm
OLE HB-03-200W	200W	10.52kg	12.08kg	3000K-5700K	150 lm/W	30000 lm
OLE HB-03-220W	220W	10.52kg	12.08kg	3000K-5700K	150 lm/W	33000 lm
OLE HB-03-250W	250W	10.52kg	12.08kg	3000K-5700K	150 lm/W	37500 lm
OLE HB-03-280W	280W	15.2kg	17.2kg	3000K-5700K	150 lm/W	42000 lm

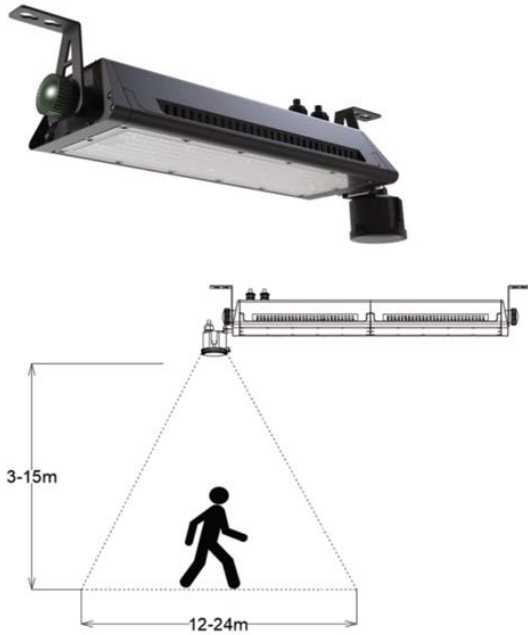
** Reported CCT and System Lumen may have a tolerance of +/-10%*

Photometric Data



Feature Diagram

1. Microwave sensor (3-15m)



2. Modular assembling (3 modules)



Dimensions

OLE HB-03-80W / 100W	OLE HB-03-120W / 150W / 180W / 200W
Packing Size: (L)597x(W)411x(H)215 	Packing Size: (L)967x(W)411x(H)215
OLE HB-03-220W / 250W / 280W	
Packing Size: (L)1337x(W)411x(H)215 	

OVERSEA LIGHTING & ELECTRIC (M) SDN. BHD. (272782-K)



LED Factory

Lot 6595, Jalan KPB12B, Kawasan Industri Kampung Baru Balakong, 43300 Seri
Kembangan, Selangor Darul Ehsan, Malaysia.
Tel: +603-8964 1878, 8964 1888, 8964 1899
Fax: +603-8964 1868
Email: info@oversealighting.com, sales@oversealighting.com
Web: www.oversealighting.com

New Factory

PT 3481, Jalan Sungai Lalang, Batu 22 ½, 43500 Semenyih, Selangor Darul Ehsan, Malaysia.



© Oversea Lighting & Electric (M) Sdn Bhd. All rights reserved. Oversea Lighting & Electric (M) Sdn Bhd reserves the right to make changes in specifications and/or to discontinue any product at anytime without notice or obligation and will not be liable for any consequences resulting from the use of this publication.