

VINC

■ Grey



OLE VINC UP



OLE VINC DOWN



OLE VINC UP/DOWN

IP65

220V
240V

CRI
>70

MADE IN
MALAYSIA

Features

Lumen Maintenance	: L90 @ 60,000 hours
Working Temperature	: -40°C ~ 50°C
Storage Temperature	: -20°C ~ 80°C
Power Factor	: >0.95 at Full Load
THD	: <20% at Full Load

Advantages

Wall luminaires with a selection of upward and downward light distributions.

Application

Applicable for Shopping Mall Building, Entrances, Residential Areas and Hotels.

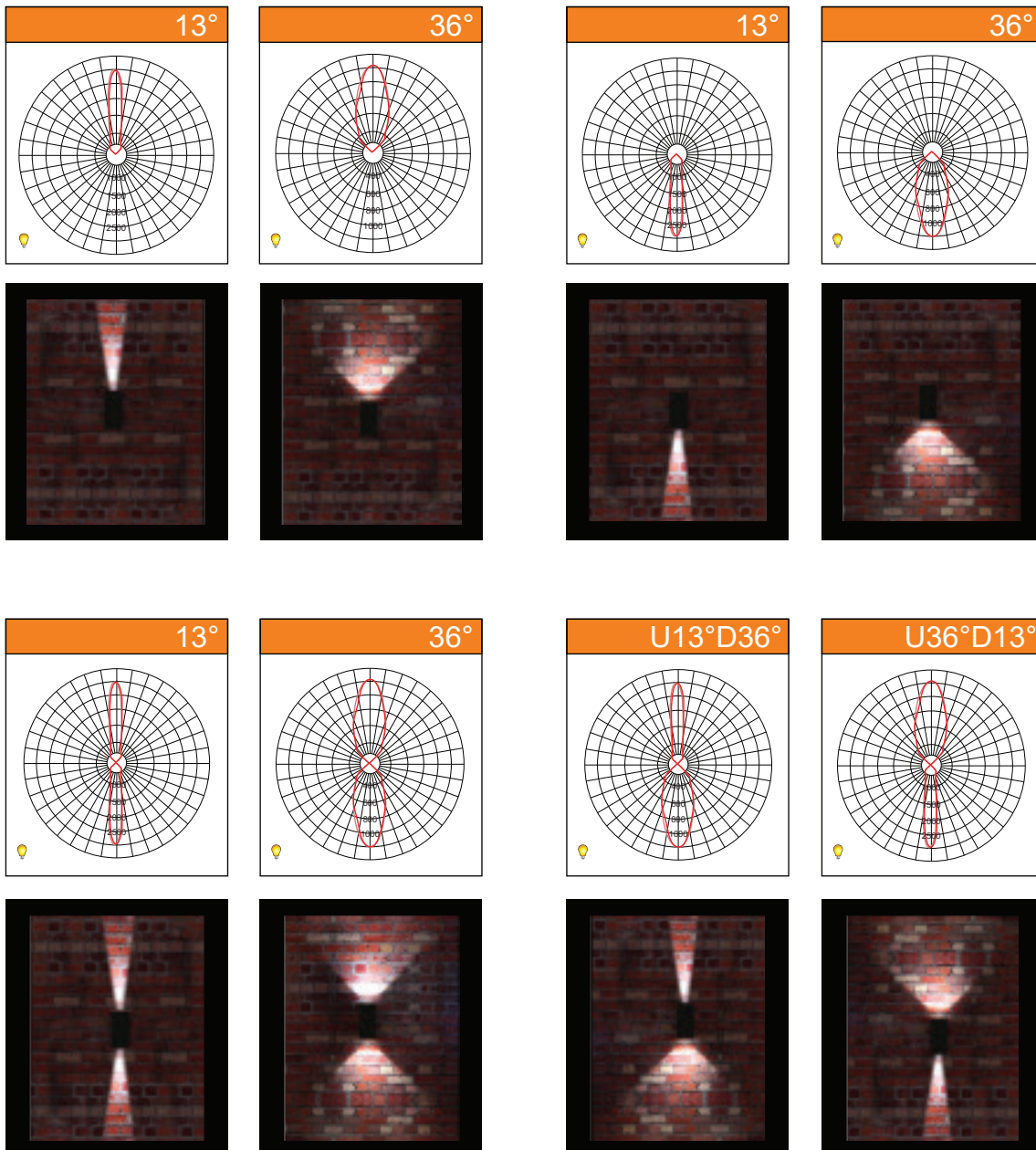
Material

Casing	: Extrusion Aluminium AA 6063-T5 with Outdoor Epoxy Powder Coated
Cover	: Tempered Glass
Bracket	: Stainless Steel
Dimming	: No Dimming

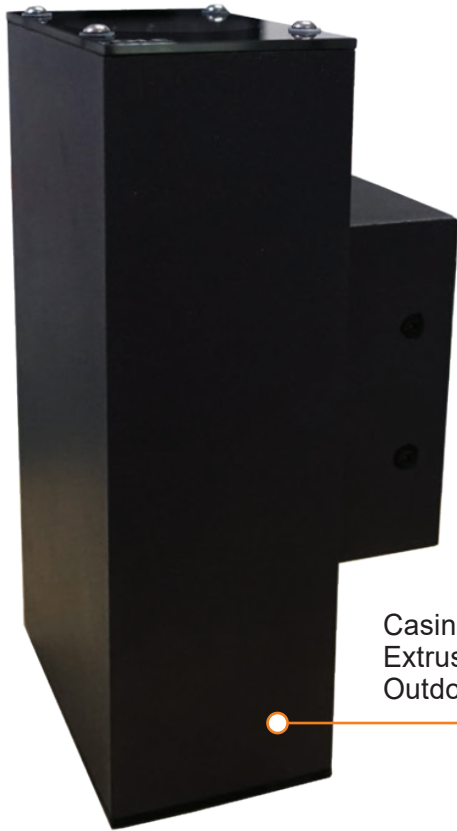
Specifications

Model No.	Power	Lamp	Input current	Weight	Color	Efficacy	Lumen
OLE VINC UP	15W	LED	0.06A	2.9kg	3500K-6000K	80 lm/W	1200 lm
OLE VINC DOWN	15W	LED	0.06A	2.9kg	3500K-6000K	80 lm/W	1200 lm
OLE VINC UP/DOWN	15Wx2	LED	0.06A	3.1kg	3500K-6000K	80 lm/W	2400 lm

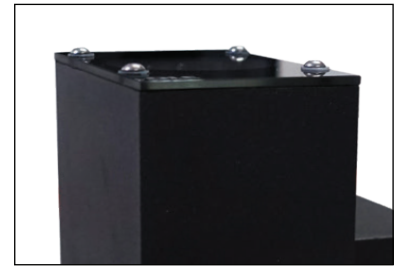
Photometric Data



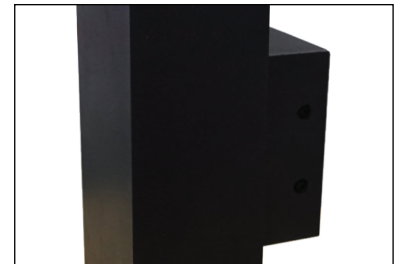
Feature Diagram



Casing Material
Extrusion Aluminium AA 6063-T5 with
Outdoor Epoxy Powder Coated



LED



Mounting Bracket

Dimensions

OLE VINC UP	OLE VINC DOWN	OLE VINC UP/DOWN
<p>Carton Size: (L)365x(W)170x(H)200</p> <p>Front view Side view Top view</p>	<p>Carton Size: (L)365x(W)170x(H)200</p> <p>Front view Side view Top view</p>	<p>Carton Size: (L)365x(W)170x(H)200</p> <p>Front view Side view Top view</p>
<p>Mounting detail</p>		